



PRODUCT CATALOGUE

2020



WWW.AXESSTRADING.COM.AU

SAFETY GRABRAILS &
PREMIUM QUALITY HEALTHCARE PRODUCTS

≡ AXESS TRADING

Suppliers of Premium Quality Healthcare Products

AT AXESS TRADING

Our aim is to provide our Customers with quality products at affordable prices.

All our products are carefully selected - either from our own local resources, or high quality global sources in the UK, Europe and Asia.



25 / 69 Acacia Rd, Ferntree Gully, VIC, 3156

Telephone: (03) 9753 6999 or 1300 138 086

Facsimile: (03) 9753 6799 or 1300 138 865

ABN:52 637 518 248

sales@axesstrading.com.au

Website: www.axesstrading.com.au

SUPPORTED BRANDS



EISEGRIP
Since 1977



AXESS
Home Modification

STRAIGHT GRABRAILS

32mm - Concealed Flange	2
32mm - Exposed Flange	4
32mm - Grabrail with Towel Rail	6
32mm - Concealed Flange - Aluminium	6
25mm - Concealed Flange	7
25mm - Exposed Flange	8

BANNISTER RAILS

38mm - Bannister Rails	9
------------------------	---

MODULAR GRABRAILS

32mm - Modular Grabrail System	11
32mm - Sliding Rails	17
32mm - Modular Tube	18
Stairway Handrail	19

TOILET GRABRAILS

Toilet Grabrails - 90°	21
Toilet Grabrails - 40°	24
Toilet Grabrails - Other	27
Drop Down Toilet Support Arm	29
Bariatric Drop Down Toilet Support Arm	31
Swing Away Toilet Support Arm	32

TOILET BACKRESTS

Toilet Backrests	35
Toilet Backrests with Grabrails (AS1428)	38

BATH GRABRAILS

Bath Grabrails	41
----------------	----

SHOWER GRABRAILS

Sanitary Compartment Layout	43
Support Grabrails for General Use	44
Grabrails for Accessible Sanitary Facilities	46
Connecta Rail for Shower Grabrails	47
Connecta with Straight Rails	48
Connecta with Cnr Shower Rails	49

GRABRAIL ACCESSORIES

32mm Sliding Shower Bracket & Soap Dish	51
Eisegrip Handshower Options	52

GRABRAIL & HANDSHOWER KITS

Eisegrip Grabrail & Handshower Kits	53
Delrana Grabrail & Handshower Kits	54

HAND HELD SHOWER SETS

Hand Held Showers	55
Delrana Hand Held Shower Sets	58
Eisegrip Hand Held Shower Sets	62

DELRANA RAIL SETS

Hand Held Shower on Grabrail	64
Hand Held Shower on Akira Rail	65

DELRANA WALL SHOWERS

Shower Rose	66
Rose on Fixed Arm	66
Rose on All Directional Arm	66

SHOWER ACCESSORIES

Shower Accessories	67
Shower Hoses	70
Swivel Aerator	71
Equalizers	71

FOLD AWAY SHOWER SEATS

AS1428 - Traditional - Powdercoated Frame	72
AS1428 - Satin Stainless Frame	73

SHOWER CURTAIN TRACKS & RAILS

Shower Curtain Tracks	74
Shower Curtain Rails	76
Weighted Shower Curtains	77

19MM ROBE / RAIL FITTINGS

Robe / Towel Rail Fittings	78
----------------------------	----

BATHROOM ACCESSORIES

Soap Baskets	79
Robe Hooks	80
Towel Rails	80
Toilet Roll Holders	81
Glass and Stainless Steel Shelves	82

SIGNAGE

Braille Signage	83
-----------------	----

THRESHOLD RAMPS

Aluminium	86
Rubber	87

TERMS AND CONDITIONS

32MM STAINLESS STEEL GRABRAILS

Concealed Flange



32MM - SATIN

Code	Description
CS32300	32mm x 300mm
CS32450	32mm x 450mm
CS32600	32mm x 600mm
CS32675	32mm x 675mm
CS32750	32mm x 750mm
CS32800	32mm x 800mm
CS32900	32mm x 900mm
CS321200	32mm x 1200mm
CS32000	Custom with Support Bracket up to 2000mm

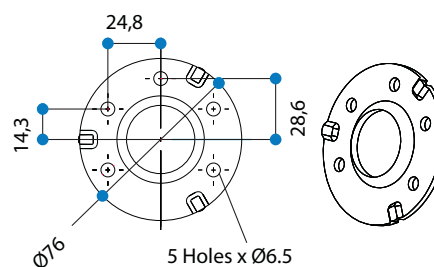
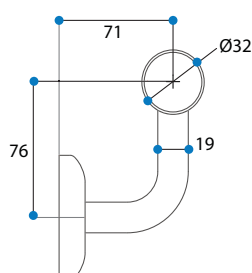
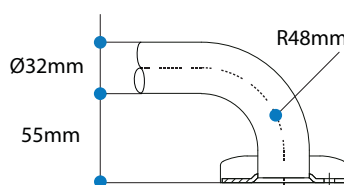
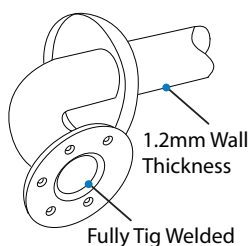
32MM - POLISHED

Code	Description
CS32300P	32mm x 300mm
CS32450P	32mm x 450mm
CS32600P	32mm x 600mm
CS32750P	32mm x 750mm
CS32900P	32mm x 900mm
CS321200P	32mm x 1200mm

STANDARD GRABRAIL DESIGN FEATURES

Fabricated using 304 grade stainless steel
Manufactured to comply with AS1428.1-2009

Standard Grabrail Bend with TIG Welded Fixing Flange



32MM STAINLESS STEEL GRABRAILS

Concealed Flange



32MM - FIRM GRIP / ANTI SLIP

Code	Description
------	-------------

Now in Modular Format



32MM - KNURLED & POLISHED

Code	Description
------	-------------

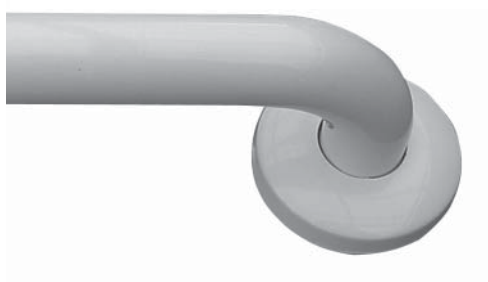
CS32300K	32mm x 300mm
CS32450K	32mm x 450mm
CS32600K	32mm x 600mm
CS32750K	32mm x 750mm
CS32900K	32mm x 900mm



32MM - PEENED / ANTI SLIP

Code	Description
------	-------------

CS32300SPN	32mm x 300mm
CS32450SPN	32mm x 450mm
CS32600SPN	32mm x 600mm
CS32750SPN	32mm x 750mm
CS32900SPN	32mm x 900mm



32MM - POWDER COATED - ALMOND IVORY

Code	Description
------	-------------

CS32300AI	32mm x 300mm
CS32450AI	32mm x 450mm
CS32600AI	32mm x 600mm
CS32750AI	32mm x 750mm
CS32900AI	32mm x 900mm
CS321200AI	32mm x 1200mm



32MM - POWDER COATED - WHITE

Code	Description
------	-------------

CS32300W	32mm x 300mm
CS32450W	32mm x 450mm
CS32600W	32mm x 600mm
CS32750W	32mm x 750mm
CS32900W	32mm x 900mm
CS321200W	32mm x 1200mm

32MM STAINLESS STEEL GRABRAILS

Concealed Flange



32MM - POWDERCOATED - BLACK

Code	Description
CS32300B	32mm x 300mm
CS32450B	32mm x 450mm
CS32600B	32mm x 600mm
CS32750B	32mm x 750mm
CS32900B	32mm x 900mm
CS321200B	32mm x 1200mm

Exposed Flange



32MM - POLISHED WITH ZINC FLANGE

Code	Description
ES32300P	32mm x 300mm
ES32450P	32mm x 450mm
ES32600P	32mm x 600mm
ES32750P	32mm x 750mm
ES32900P	32mm x 900mm
ES321200P	32mm x 1200mm



32MM - SATIN

Code	Description
ESS32300S	32mm x 300mm
ESS32450S	32mm x 450mm
ESS32600S	32mm x 600mm



32MM - POWDER COATED - ALMOND IVORY

Code	Description
ESS32300AI	32mm x 300mm
ESS32450AI	32mm x 450mm
ESS32600AI	32mm x 600mm



32MM - POWDER COATED - WHITE

Code	Description
ESS32300W	32mm x 300mm
ESS32450W	32mm x 450mm
ESS32600W	32mm x 600mm

32MM STAINLESS STEEL GRABRAILS

Angled Jesse Rail - Exposed Flange



32MM - SATIN JESSE RAIL

Code	Description
ESJ32300	32mm x 300mm

Exposed Narrow Flange



32MM - SATIN

Code	Description
ESN323001	32mm x 300mm - Satin
ESN324501	32mm x 450mm - Satin
ESN326001	32mm x 600mm - Satin
ESN327501	32mm x 750mm - Satin
ESN329001	32mm x 900mm - Satin



32MM - POWDER COATED - ALMOND IVORY

Code	Description
ESN323001AI	32mm x 300mm - Almond Ivory
ESN324501AI	32mm x 450mm - Almond Ivory

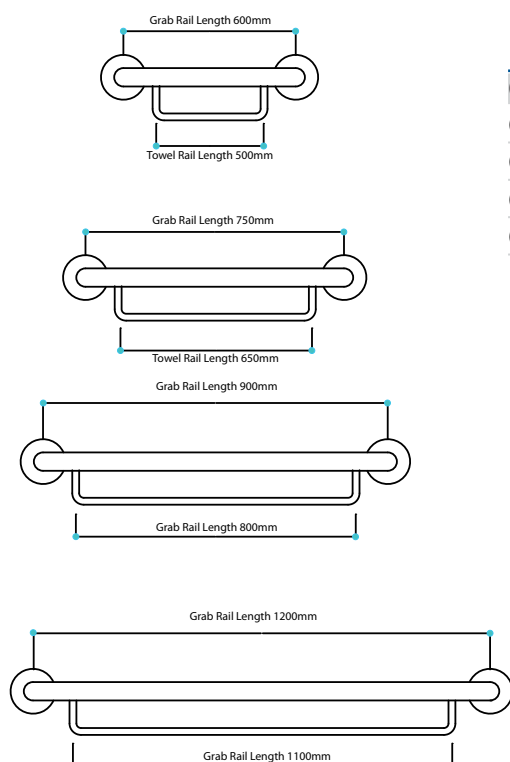


32MM - POWDER COATED - WHITE

Code	Description
ESN323001W	32mm x 300mm - White
ESN324501W	32mm x 450mm - White

32MM STAINLESS STEEL GRABRAILS WITH TOWEL RAIL

Concealed Flange



32MM - GRABRAIL / TOWEL RAIL

Code	Description	Towel Rail
CS32600T	32mm x 600mm	500mm
CS32750T	32mm x 750mm	650mm
CS32900T	32mm x 900mm	800mm
CS321200T	32mm x 1200mm	1100mm



32MM ALUMINIUM GRABRAILS



32MM - POWDER COATED - ALMOND IVORY RIPPLE

Code	Description
CSB32300AIR	32mm x 300mm
CSB32450AIR	32mm x 450mm
CSB32600AIR	32mm x 600mm
CSB32750AIR	32mm x 750mm
CSB32900AIR	32mm x 900mm
CSB321200AIR	32mm x 1200mm



32MM - POWDER COATED - WHITE RIPPLE

Code	Description
CSB32300WR	32mm x 300mm
CSB32450WR	32mm x 450mm
CSB32600WR	32mm x 600mm
CSB32750WR	32mm x 750mm
CSB32900WR	32mm x 900mm
CSB321200WR	32mm x 1200mm

25MM STAINLESS STEEL GRABRAILS

Concealed Flange



25MM - SATIN

Code	Description
CS25300	25mm x 300mm
CS25450	25mm x 450mm
CS25600	25mm x 600mm
CS25750	25mm x 750mm
CS25900	25mm x 900mm
CS251200	25mm x 1200mm



25MM - POLISHED

Code	Description
CS25300P	25mm x 300mm
CS25450P	25mm x 450mm
CS25600P	25mm x 600mm
CS25750P	25mm x 750mm
CS25900P	25mm x 900mm
CS251200P	25mm x 1200mm



25MM - POWDER COATED - ALMOND IVORY

Code	Description
CS25300AI	25mm x 300mm
CS25450AI	25mm x 450mm
CS25600AI	25mm x 600mm



25MM - POWDER COATED - WHITE

Code	Description
CS25300W	25mm x 300mm
CS25450W	25mm x 450mm
CS25600W	25mm x 600mm

25MM STAINLESS STEEL GRABRAILS

2 Hole - Exposed Chrome Plated Flange



25MM - POLISHED

Code	Description
ES25300P	25mm x 300mm
ES25450P	25mm x 450mm
ES25600P	25mm x 600mm
ES25750P	25mm x 750mm
ES25900P	25mm x 900mm

Single Hole - Exposed Narrow Flange



25MM - SATIN

Code	Description
ESN253001	25mm x 300mm
ESN254501	25mm x 450mm
ESN256001	25mm x 600mm
ESN257501	25mm x 750mm
ESN259001	25mm x 900mm



25MM - POWDER COATED - ALMOND IVORY

Code	Description
ESN253001AI	25mm x 300mm - Almond Ivory



25MM - POWDER COATED - WHITE

Code	Description
ESN253001W	25mm x 450mm - White

Single Hole - Exposed Flange



25MM - POLISHED

Code	Description
S25300P	25mm x 300mm
S25450P	25mm x 450mm
S25600P	25mm x 600mm
S25750P	25mm x 750mm
S25900P	25mm x 900mm

38MM BANNISTER RAILS

Satin Stainless Steel



TOP OF POST FITTING

Code	Description
AB39.2	Top of Post Fitting with Tab



TOP OF POST COMPLETE

Code	Description
AB39	With Top of Post Fitting & Sliding Ring Clip



SLIDING RING CLIP

Code	Description
AB39.1	Connects to Tab on Top of Post Fitting



PIVOTING WALL CONNECTOR COMPLETE

Code	Description
AB07	With Top of Post Fitting & Wall Connector



WALL FITTING FOR PIVOTING CONNECTOR

Code	Description
AB07.1	Wall Fitting with Tab

Home Modification

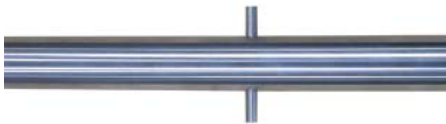
38MM BANNISTER RAILS

Satin Stainless Steel



38MM POST WITH FIXING FLANGE

Code	Description
AB100.AF	1000mm Use with AB39



38MM CONCRETING POST

Code	Description
AB100.CP	1400mm Use with AB39



SLIDING UNDERSLUNG SUPPORT

Code	Description
AB24	Sliding Underslung Support



38MM STAINLESS STEEL TUBE

Code	Description
AB1000	1000mm
AB1000S	1000mm Swaged end with Ring
AB1500	1500mm
AB1500S	1500mm Swaged end with Ring
AB2000	2000mm
AB2000S	2000mm Swaged end with Ring



38MM RAMP RETURN END WITH TAB

Code	Description
AB43T1000	1000mm
AB43T1000S	1000mm Swaged end with Ring
AB43T1500	1500mm
AB43T1500S	1500mm Swaged end with Ring
AB43T2000	2000mm
AB43T2000S	2000mm Swaged end with Ring

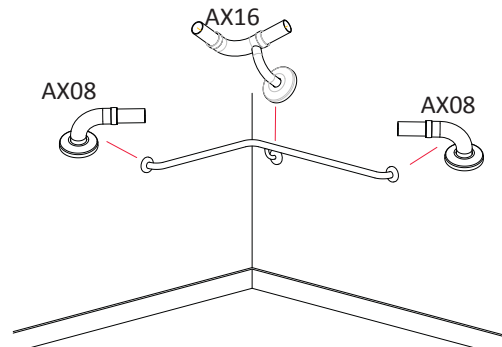
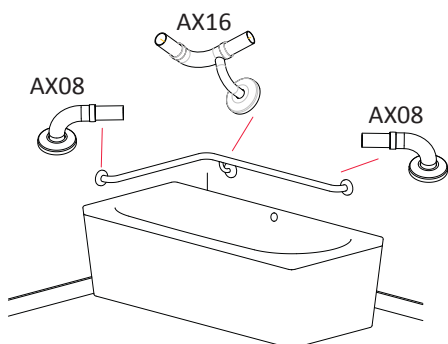
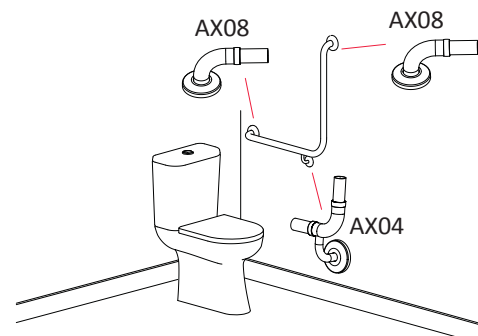
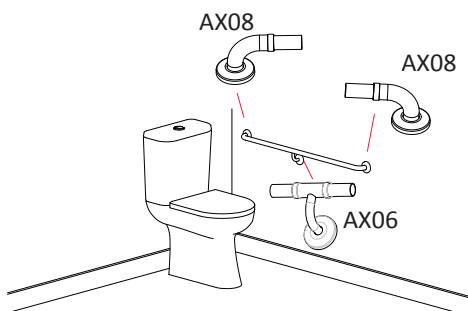
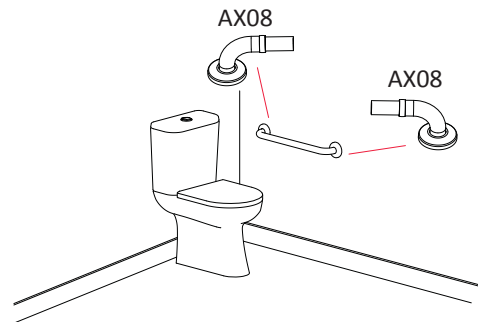
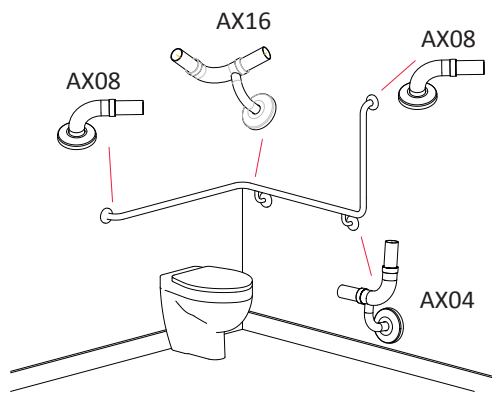
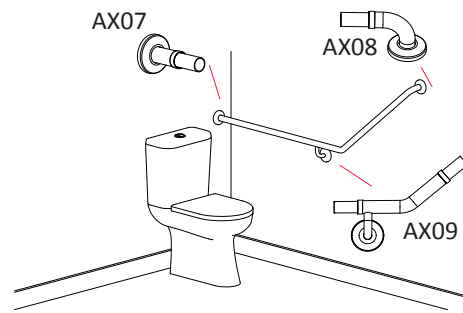
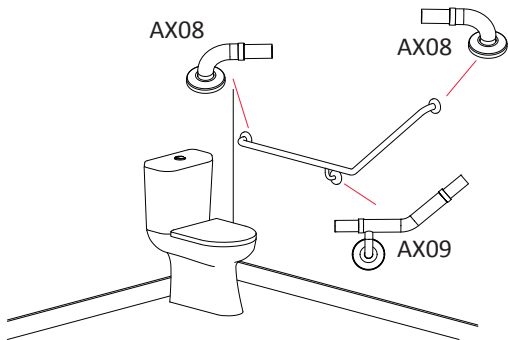


38MM RAMP RETURN END

Code	Description
AB431000	1000mm
AB431000S	1000mm Swaged end with Ring
AB431500	1500mm
AB431500S	1500mm Swaged end with Ring
AB432000	2000mm
AB432000S	2000mm Swaged end with Ring

32MM MODULAR GRABRAIL SYSTEMS

Some Popular Assembly Options



32MM MODULAR GRABRAIL SYSTEMS

Stainless Steel



STRAIGHT END - CONCEALED FLANGE

Code	Description
AX07	Satin
AX07AI	Almond Ivory
AX07W	White

ELBOW END - CONCEALED FLANGE (PAIR)

Code	Description
AX08	Satin
AX08AI	Almond Ivory
AX08W	White



CORNER ELBOW END - CONCEALED FLANGE (SINGLES)

Code	Description
AX15	Satin
AX15AI	Almond Ivory
AX15W	White

ELBOW END - SINGLE HOLE FLANGE (PAIR)

Code	Description
AX26	Satin
AX26AI	Almond Ivory
AX26W	White

ELBOW END - NARROW FLANGE (PAIR)

Code	Description
AX27	Satin
AX27AI	Almond Ivory
AX27W	White

90° BEND

Code	Description
AX01	Satin
AX01AI	Almond Ivory
AX01W	White

32MM MODULAR GRABRAIL SYSTEMS

Stainless Steel



40° BEND

Code	Description
AX02	Satin
AX02AI	Almond Ivory
AX02W	White



T PIECE

Code	Description
AX05	Satin
AX05AI	Almond Ivory
AX05W	White



STRAIGHT JOINER SUPPORT

Code	Description
AX06	Satin
AX06AI	Almond Ivory
AX06W	White



90° ELBOW HORIZONTAL SUPPORT RH

Code	Description
AX03	Satin
AX03AI	Almond Ivory
AX03W	White



90° ELBOW HORIZONTAL SUPPORT LH

Code	Description
AX16	Satin
AX16AI	Almond Ivory
AX16W	White



90° INNER CORNER SUPPORT

Code	Description
AX10	Satin
AX10AI	Almond Ivory
AX10W	White

32MM MODULAR GRABRAIL SYSTEMS

Stainless Steel



90° ELBOW VERTICAL SUPPORT RH

Code	Description
AX04	Satin
AX04AI	Almond Ivory
AX04W	White



90° ELBOW VERTICAL SUPPORT LH

Code	Description
AX17	Satin
AX17AI	Almond Ivory
AX17W	White



40° BEND SUPPORT RH

Code	Description
AX09	Satin
AX09AI	Almond Ivory
AX09W	White



40° BEND SUPPORT LH

Code	Description
AX18	Satin
AX18AI	Almond Ivory
AX18W	White



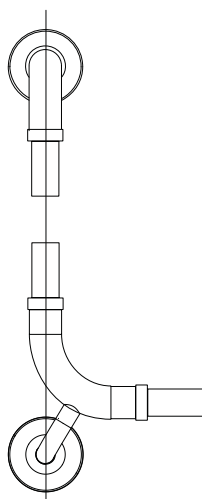
90° ELBOW VERTICAL SUPPORT FOR STUD LINE RH

Code	Description
AX19	Satin
AX19AI	Almond Ivory
AX19W	White



90° ELBOW VERTICAL SUPPORT FOR STUD LINE LH

Code	Description
AX20	Satin
AX20AI	Almond Ivory
AX20W	White



32MM MODULAR GRABRAIL SYSTEMS

Stainless Steel



GRAB RAIL SUPPORT

Code	Description
AX22	Satin
AX22AI	Almond Ivory
AX22W	White



SLIDING UNDERSLUNG SUPPORT

Code	Description
AX24	Satin



SLIDING IN-LINE SUPPORT BRACKET

Code	Description
AX39	Satin Round Flange



SLIDING IN-LINE SUPPORT BRACKET

Code	Description
AX39N	Satin Narrow Flange - For Sliding Rail



90° EXTERNAL CORNER SUPPORT BEND FACING POST

Code	Description
AX30	Satin



90° INTERNAL CORNER SUPPORT BEND AWAY FROM POST

Code	Description
AX31	Satin

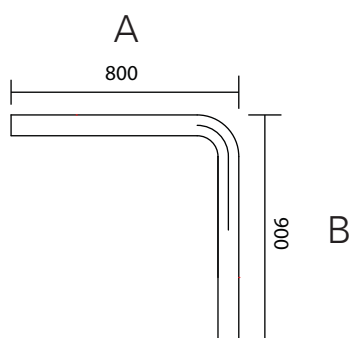
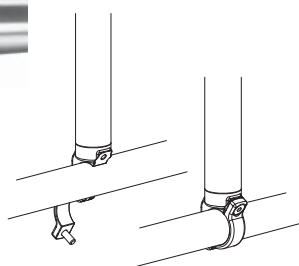


90° BEND TOP OF POST

Code	Description
AX44	Satin

32MM MODULAR GRABRAIL SYSTEMS

Stainless Steel



CONNECTA WITH 32MM TUBE

Code	Description
AX1000CA	Connecta with 1000mm Tube
	Registered Design 14407/2012
	For Further Reference - See Shower Grabrails

32MM TUBE - 90° BEND

Code	Description	Finish
AX8090	Standard Size A=800 B=900	Satin
	To Order Specify Size A & B	

Stainless Steel Rail with Sliding Support Bracket
Suitable for Corner Stud



32MM - SLIDING GRABRAIL

Code	Description
ASL32750	32mm x 750mm
ASL321000	32mm x 1000mm



32MM - RAIL NOT INCLUDING SLIDER

Code	Description
AX15.1000	32mm x 1000mm

32MM MODULAR GRABRAIL SYSTEMS

Stainless Steel For Ramps and Bannisters



32MM PIVOT ELBOW

Code	Description
AX40	Satin



4° BEND

Code	Description	Finish
AX41	Suits 1:14 Degrees Ramp Slope	Satin



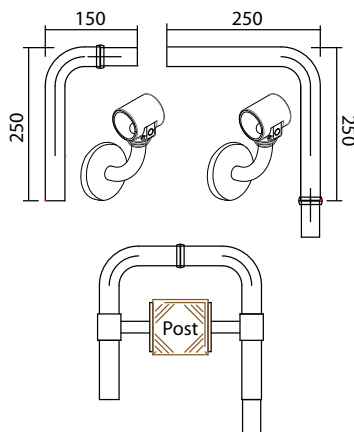
32MM TUBE - SWAGED ON ONE END

Code	Description	Finish
AX1001	32mm x 1000mm	Satin
AX2001	32mm x 2000mm	Satin



180° RAMP RETURN ENDS

Code	Description	Finish
AX43.1500	1500mm	Satin
AX43.500	500mm	Satin



ADJUSTABLE RETURN RAMP HANDRAIL

Code	Description	Finish
AX45	With Supports	Satin



32MM PLASTIC TUBE INSERT

Code	Description
AP32	Black Plastic

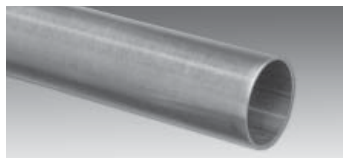


32MM PLASTIC DOME HEAD

Code	Description
AP33	Black Plastic

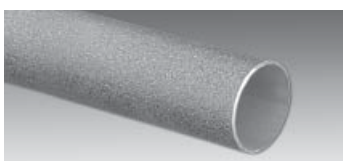
32MM MODULAR GRABRAIL SYSTEMS

Stainless Steel and Powdercoated Aluminium



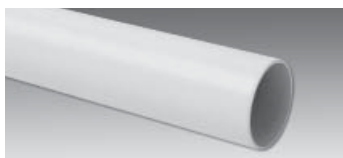
32MM - SATIN

Code	Description
AX1000	32mm x 1000mm Stainless Steel
AX1500	32mm x 1500mm Stainless Steel
AX2000	32mm x 2000mm Stainless Steel



32MM - FIRM GRIP / ANTI SLIP

Code	Description
AX1000F	32mm x 1000mm Stainless Steel
AX2000F	32mm x 2000mm Stainless Steel
	End of range



32MM - POWDER COATED - ALMOND IVORY

Code	Description
AX1000AI	32mm x 1000mm Aluminium
AX2000AI	32mm x 2000mm Aluminium



32MM - POWDER COATED - ALMOND IVORY RIPPLE

Code	Description
AX1000AIR	32mm x 1000mm Aluminium
AX2000AIR	32mm x 2000mm Aluminium



32MM - POWDER COATED - WHITE

Code	Description
AX1000W	32mm x 1000mm Aluminium
AX2000W	32mm x 2000mm Aluminium



32MM - POWDER COATED - WHITE RIPPLE

Code	Description
AX1000WR	32mm x 1000mm Aluminium
AX2000WR	32mm x 2000mm Aluminium



32MM SWAGED ON ONE END - SATIN

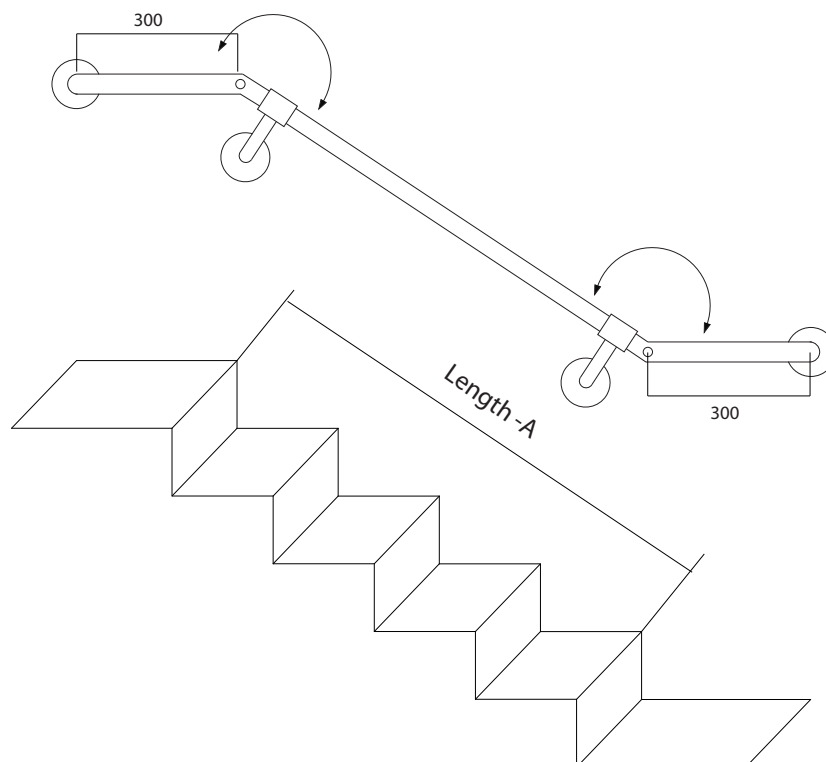
Code	Description
AX1001	32mm x 1000mm Stainless Steel
AX2001	32mm x 2000mm Stainless Steel

32MM MODULAR GRABRAIL SYSTEMS

Adjustable Stairway Hand Rail Kit

ADJUSTABLE STAIRWAY HANDRAIL KIT

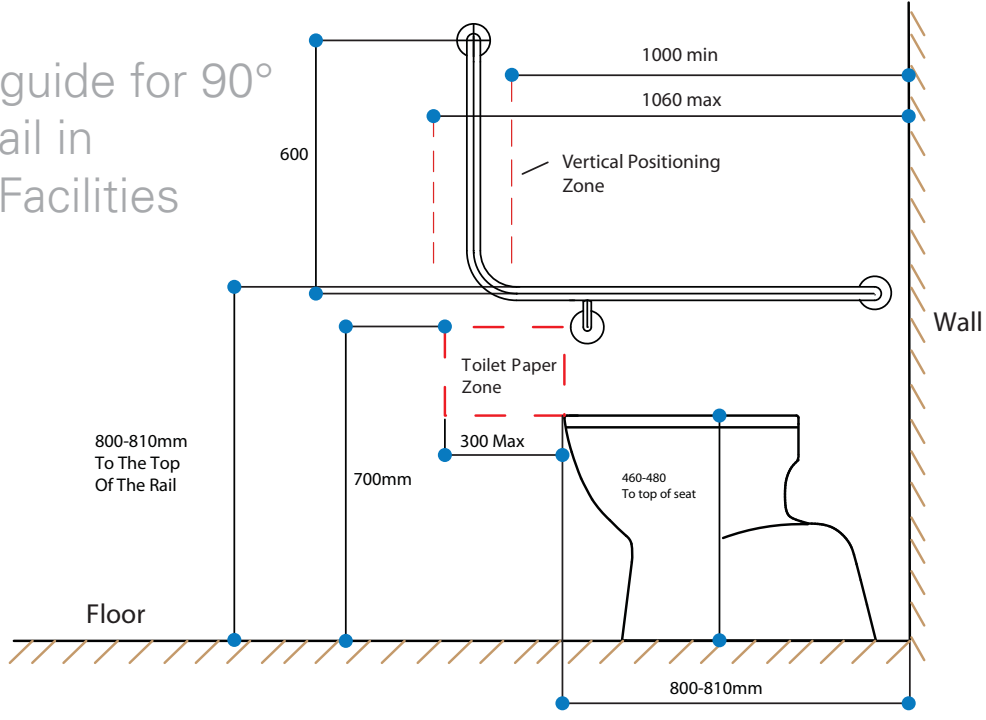
Code	Description
AX42KIT100	1000mm Tube length 1300mm
AX42KIT200	2000mm Tube length 2300mm



[illegible]

32MM TOILET GRABRAILS

Installation guide for 90° Toilet Grabrail in Accessible Facilities

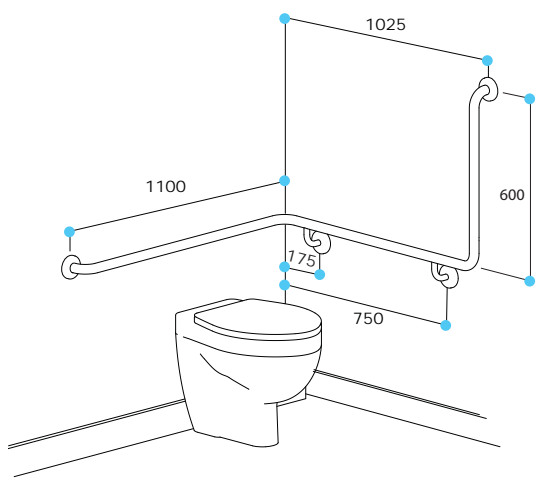


This illustration serves as a guide only. Please consult the Building Code of Australia (BCA)

Stainless Steel 90° Toilet Grabrails

- Finish: Satin Stainless (Powder coating available to order for projects)
- Tube: 32mm
- Fixings: Concealed flanges (Exposed fixings are available to order)
- Factory fitted toilet roll holders available on request
- Custom rails available to order.

90° BEND CORNER TOILET GRABRAIL FOR IN-WALL CISTERN			TYPE T32
Code	Description		
EGT32.10.SCX	As Shown (Left)	1100mm x 1025mm x 600mm(Vertical)	AS1428.1-2009 Accessible*
EGT32.11.SCX	Opposite Hand		AS1428.1-2009 Accessible*



* Compliant with AS1428.1-2009, if installed as per the provisions of the standard

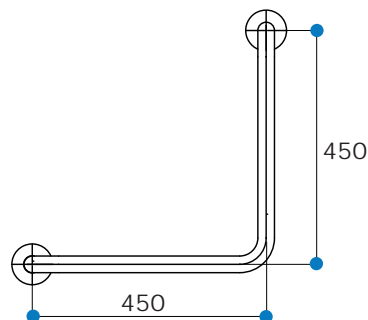
32MM TOILET GRABRAILS

Stainless Steel 90° Toilet Rails

90° BEND TOILET GRABRAIL

TYPE T2A

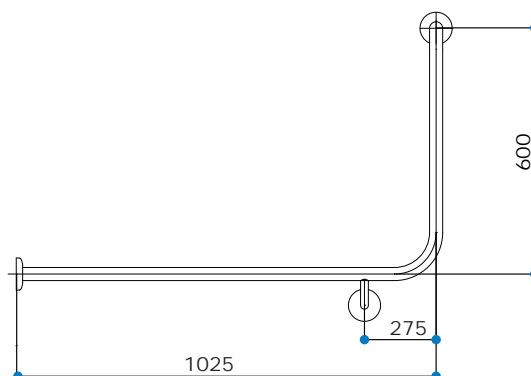
Code	Description		
EGT2A.10.SC	Reversible	450mm x 450mm	AS1428.1-2009 Ambulant *



90° BEND BACK WALL FIXED TOILET GRABRAIL

TYPE T11

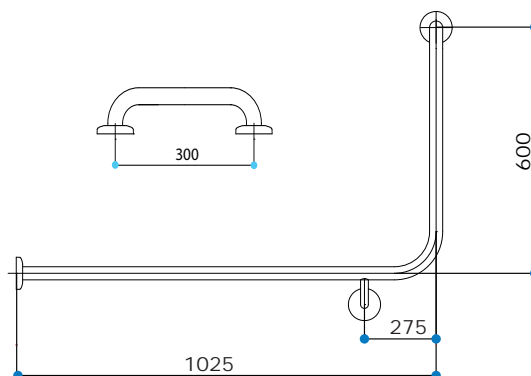
Code	Description		
EGT11.30SCX	As Shown (Left)	1025 x 600mm	AS1428.1-2009 Accessible *
EGT11.31SCX	Opposite Hand	1025 x 600mm	AS1428.1-2009 Accessible *



90° BEND TOILET GRABRAIL WITH 300MM RAIL

TYPE T11COMBO

Code	Description		
EGT11.30C	As Shown (Left)	1025 x 600mm	AS1428.1-2009 Accessible *
EGT11.31C	Opposite Hand	1025 x 600mm	AS1428.1-2009 Accessible *



* Compliant with AS1428.1-2009, if installed as per the provisions of the standard

32MM TOILET GRABRAILS

Stainless Steel 90° Toilet Rails

PARTITION COVER PLATES

Code	Description
AFPPF	Stainless Steel - Used for hiding screws

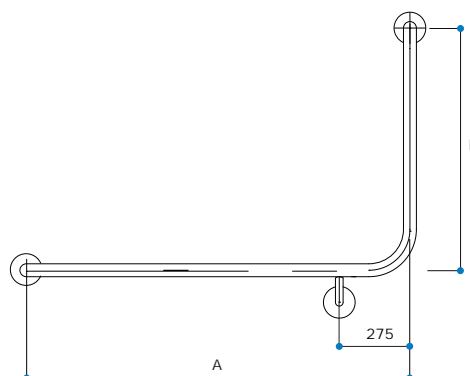


Factory fitted roll holders
available on request

90° BEND TOILET GRABRAIL

TYPE T14

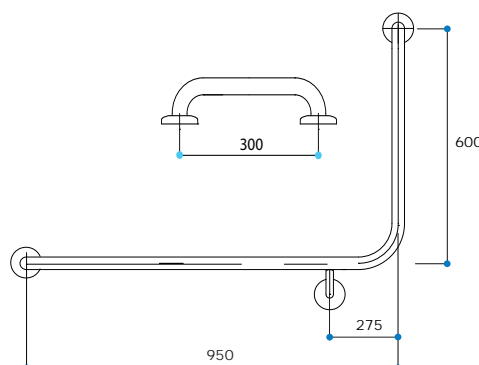
Code	Description	A	B	
EGT14.00SCX	As Shown (Left)	600mm	600mm	- Custom made
EGT14.01SCX	Opposite Hand	600mm	600mm	- Custom made
EGT14.20SCX	As Shown (Left)	950mm	600mm	AS1428.1-2009 Accessible *
EGT14.21SCX	Opposite Hand	950mm	600mm	AS1428.1-2009 Accessible *



90° BEND TOILET GRABRAIL WITH 300MM RAIL

TYPE T14 COMBO

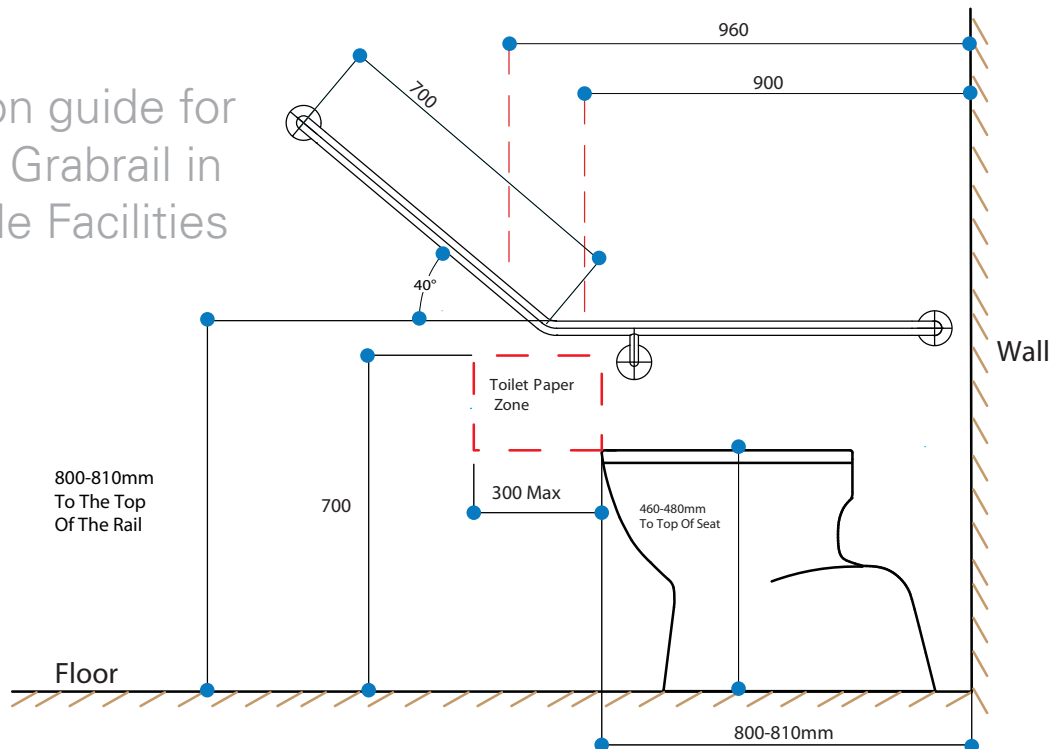
Code	Description		
EGT14.20C	As Shown (Left)	950mm x 600mm	AS1428.1-2009 Accessible *
EGT14.21C	Opposite Hand	950mm x 600mm	AS1428.1-2009 Accessible *



* Compliant with AS1428.1-2009, if installed as per the provisions of the standard

32MM TOILET GRABRAILS

Installation guide for 40° Toilet Grabrail in Accessible Facilities



This illustration serves as a guide only. Please consult the Building Code of Australia (BCA)

Stainless Steel 40° Toilet Grabrails

Finish: Satin Stainless (Powder coating available to order for projects)

Tube: 32mm

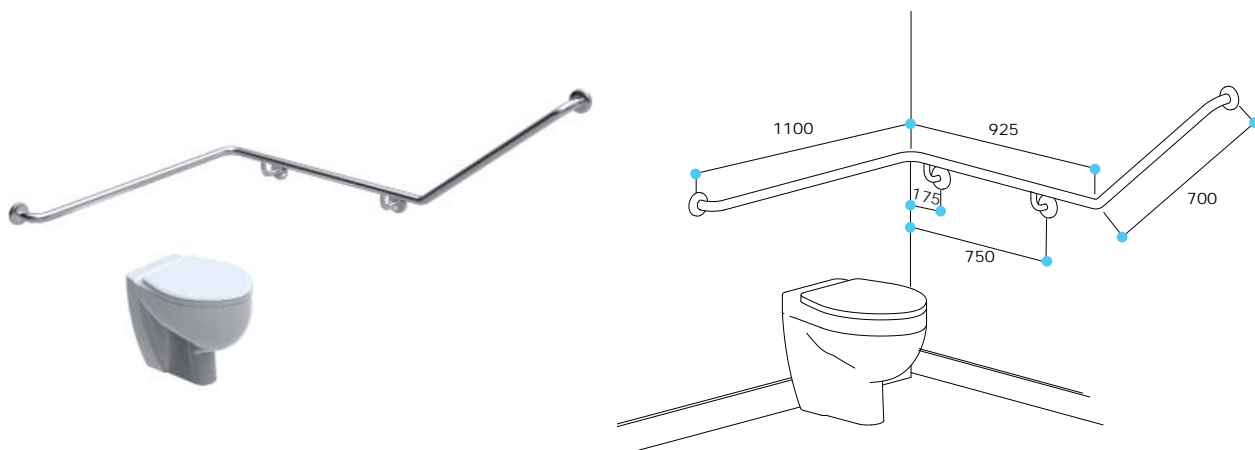
Fixings: Concealed flanges (Exposed fixings are available to order)

Factory fitted toilet roll holders available on request

Custom rails available to order.

40° BEND CORNER TOILET GRABRAIL FOR IN-WALL CISTERN TYPE T30

Code	Description		
EGT30.10.SCX	As Shown (Left)	1100mm x 925mm x 700mm(Vertical)	AS1428.1-2009 Accessible *
EGT30.11.SCX	Opposite Hand	1070mm x 925mm x 700mm(Vertical)	AS1428.1-2009 Accessible *



* Compliant with AS1428.1-2009, if installed as per the provisions of the standard

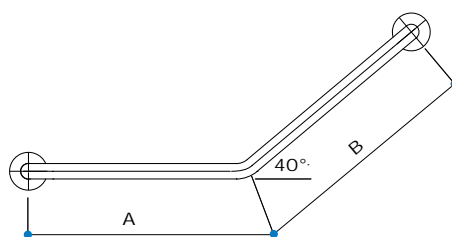
32MM TOILET GRABRAILS

Stainless Steel - 40° Toilet Rails

40° BEND TOILET GRABRAIL

TYPE T2

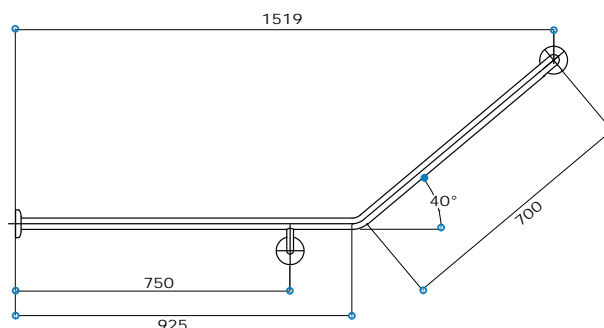
Code	Description	A	B	
EGT2.10.SC	Reversible	450mm	450mm	
EGT2.20.SC	As Shown (Left)	450mm	700mm	AS1428.1-2009 Ambulant *
EGT2.21.SC	Opposite Hand	450mm	700mm	AS1428.1-2009 Ambulant *



40° BEND BACK WALL FIXED TOILET GRABRAIL

TYPE T12

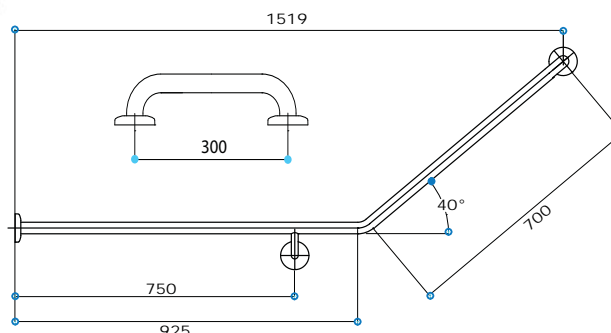
Code	Description		
EGT12.30.SCX	As Shown (Left)	925mm x 700mm	AS1428.1-2009 Accessible *
EGT12.31.SCX	Opposite Hand	925mm x 700mm	AS1428.1-2009 Accessible *



40° BEND TOILET GRABRAIL WITH 300MM RAIL

TYPE T12 COMBO

Code	Description		
EGT12.30C	As Shown (Left)	925mm x 700mm	AS1428.1-2009 Accessible *
EGT12.31C	Opposite Hand	925mm x 700mm	AS1428.1-2009 Accessible *



* Compliant with AS1428.1-2009, if installed as per the provisions of the standard

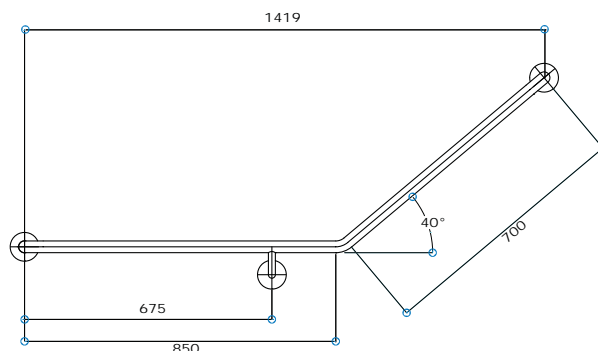
32MM TOILET GRABRAILS

Stainless Steel - 40° Toilet Rails

40° BEND TOILET GRABRAIL

TYPE T20

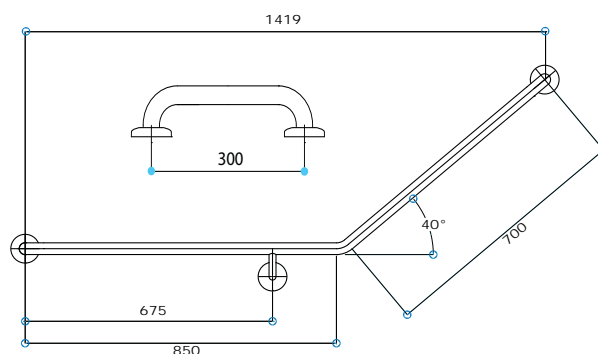
Code	Description		
EGT20.10.SCX	As Shown (Left)	850mm x 700mm	AS1428.1-2009 Accessible *
EGT20.11.SCX	Opposite Hand	850mm x 700mm	AS1428.1-2009 Accessible *



40° BEND TOILET GRABRAIL WITH 300MM GRABRAIL

TYPE T20 COMBO

Code	Description		
EGT20.10C	As Shown (Left)	850mm x 700mm	AS1428.1-2009 Accessible *
EGT20.11C	Opposite Hand	850mm x 700mm	AS1428.1-2009 Accessible *



* Compliant with AS1428.1-2009, if installed as per the provisions of the standard

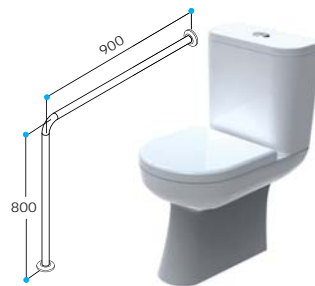
32MM TOILET GRABRAILS

Stainless Steel

90° BEND FLOOR TO WALL TOILET SUPPORT RAIL

TYPE T4

Code	Description		
EGT4.10.S	Floor to Wall	900mm x 800mm	Standard
EGT4.10.S.TR	Floor to Wall	900mm x 800mm	With TR Holder
EGT4.10.S.OR	Floor to Wall	900mm x 800mm	With Outrigger / Support Leg
EGT4.10.S.TROR	Floor to Wall	900mm x 800mm	With Outrigger & TR Holder



U SHAPED FLOOR TO FLOOR SUPPORT RAIL

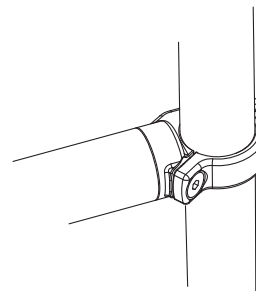
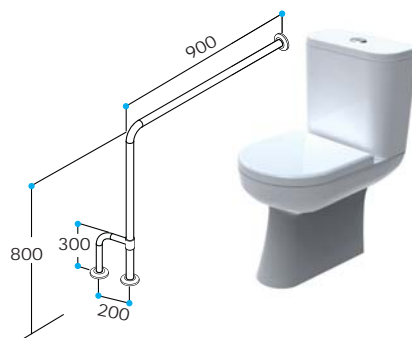
TYPE T5

Code	Description		
EGT5.10.S	Floor to Floor	800mm x 700mm x 800mm	Standard
EGT5.10.S.OR	Floor to Floor	800mm x 700mm x 800mm	With Outrigger / Support Leg



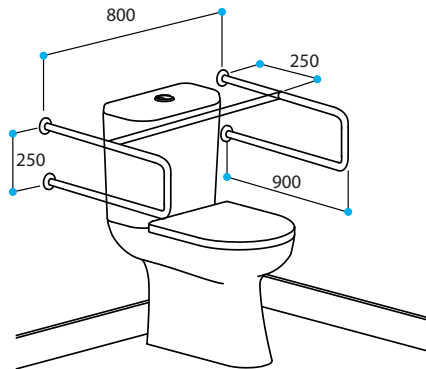
RETROFIT OUTRIGGER / SUPPORT LEG TO FIT T4 AND T5

Code	Description		
EGTOUTRIGGERCA		32mm Stainless Steel	300mm x 200mm



32MM TOILET GRABRAILS

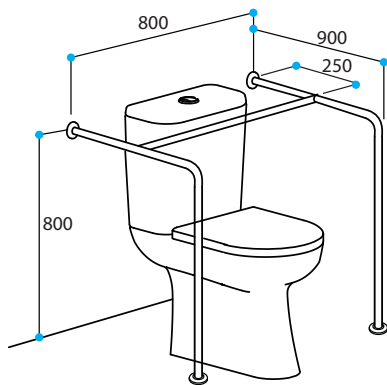
Other Toilet Rails



TOILET SUPPORT RAIL

TYPE T6

Code	Description
EGT6.10.S	Toilet Support 900mm x 800mm x 250mm(H)



TOILET SUPPORT RAIL

TYPE T7

Code	Description
EGT7.10.S	Floor to Wall 900mm x 800mm x 800mm(H)



TOILET SUPPORT RAIL TO BACK WALL TYPE T1

Code	Description
EGT1.10.S	Straight Rail 1200mm



CS32000

Code	Description
CS32000	Straight Rail Up to 2000mm With Support

32MM TOILET GRABRAILS

EISEGRIP® T40 "Auto-Hold" Drop Down Support Arm

Finish: Satin Stainless (Powdercoating available to order)

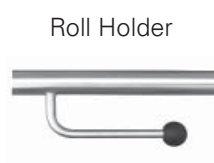
Features:

- Unique click in mechanism that allows the rail to remain safely in the up or down position
- Easy one hand motion to raise or lower rail without effort
- Engineered hub design gives smooth movement
- No cumbersome levers or knobs
- Premium Australian made product

AUTO HOLD DROP DOWN TOILET RAIL

TYPE T40

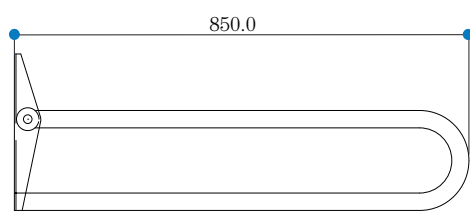
Code	Description	
EGT40.S	Standard	Satin Finish
EGT40.S.TR	With Roll Holder	Satin Finish
EGT40.S.NC	With Nurse Call Provision (Left or Right)	Satin Finish
EGT40.S.TR.NC	With Roll Holder - Nurse Call Provision (Left or Right)	Satin Finish
EGT40.PC	Standard	Powdercoated
EGT40.PC.TR	With Roll Holder	Powdercoated
EGT40.PC.NC	With Nurse Call Provision (Left or Right)	Powdercoated
EGT40.PC.TR.NC	With Roll Holder - Nurse Call Provision (Left or Right)	Powdercoated



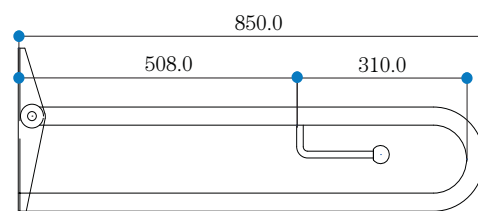
Roll Holder



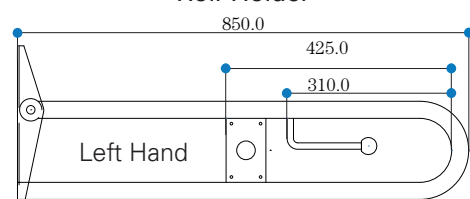
Standard Model



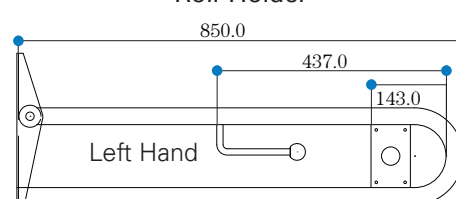
With Roll Holder



With Standard Nursecall Position & Roll Holder



With Front Nursecall Position & Roll Holder



32MM TOILET GRABRAILS

Stainless Steel Drop Down Support Arms

SELF SUPPORTED DROP DOWN TOILET RAIL

TYPE T45

Code	Description
EGT45.S	Standard - Satin Finish
EGT45.S.TR	With Roll Holder

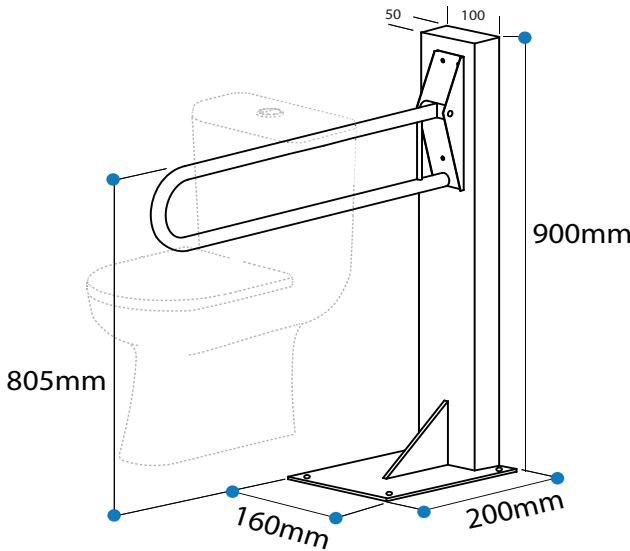


FLOOR POST FOR DROP DOWN TOILET RAIL

TYPE T41

Code	Description
EGT41.S	Standard - Satin Finish
	Drop Down Rail Not Included

Pre-Drilled for correct height
EGT40 and EGT45



38MM TOILET GRABRAILS

EISEGRIP[®] T46 Bariatric Drop Down Toilet Grabrail

Features

- This design allows for vertical (SWL) up to 300kg and lateral (SWL) up to 160kg.
- Support leg with height adjustable anti-slip foot pad.
- Support leg locks in position when open.
- Grabrail is locked in upright position with a locking mechanism.
- Left or right hand available.
- Electro polished stainless steel structure for long term protection.
- Optional toilet roll holder and nurse call provision available.
- Each support arm package includes an installation diagram highlighting critical measurements with compliance to AS1428.1-2009.

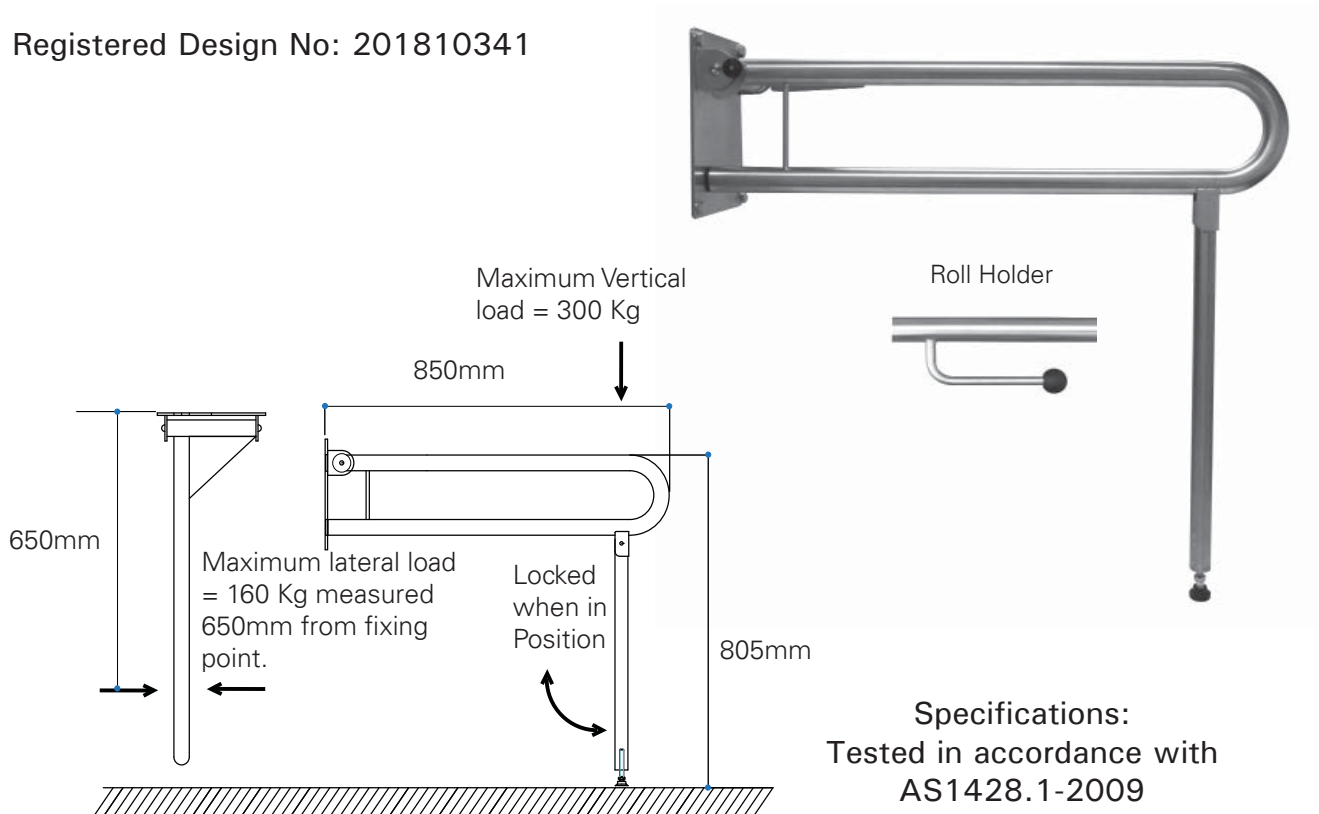
BARIATRIC DROP DOWN TOILET RAIL

TYPE T46

Code	Description
EGT46.SL	Standard - Satin Finish Left hand
EGT46.SR	Standard - Satin Finish Right hand
EGT46.SL.TR	With Roll Holder (Left)
EGT46.SR.TR	With Roll Holder (Right)
EGT46.SL.NC	With Nurse Call Provision (Left)
EGT46.SR.NC	With Nurse Call Provision (Right)
EGT46.SL.TR.NC	With Roll Holder & Nurse Call Provision (Left)
EGT46.SR.TR.NC	With Roll Holder & Nurse Call Provision (Right)

Designed By Axess Trading & Manufactured in Australia

Registered Design No: 201810341



32MM TOILET GRABRAILS

EISEGRIP® Stainless Steel - Swing Away Toilet Support Arm

Finish: Satin Stainless (Powdercoating available to order)

- Features:**
- Double grabrail that swings away horizontally to allow for more space beside the toilet.
 - Universal design for left and right hand installation
 - The locking points are at 45° increments as required by the user
 - This product can be installed against walls that have irregular angles

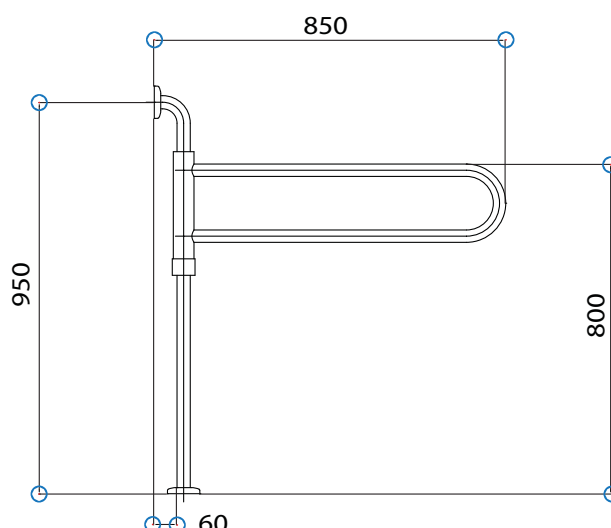
SWING AWAY TOILET RAIL

TYPE T13

Code	Description	
EGT13.S	Standard Model	Satin
EGT13.S.TR	With Roll Holder	Satin
EGT13.S.NC	With Nurse Call Provision (Left or Right)	Satin
EGT13.S.TR.NC	With Roll Holder - Nurse Call Provision (Left or Right)	Satin
EGT13.PC	Standard Model	Powdercoated
EGT13.PC.TR	With Roll Holder	Powdercoated
EGT13.PC.NC	With Nurse Call Provision (Left or Right)	Powdercoated
EGT13.PC.TR.NC	With Roll Holder - Nurse Call Provision (Left or Right)	Powdercoated



Roll Holder



32MM TOILET GRABRAILS

Stainless Steel - Swing Away Toilet Support Arm

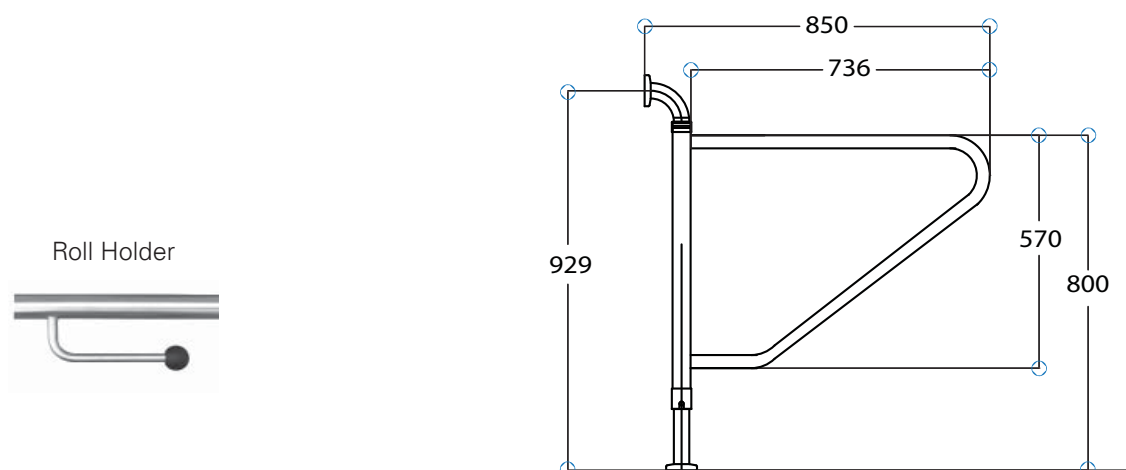
Finish: Satin Stainless (Powdercoating available to order)

- Features:**
- Double grabrail that swings away horizontally to allow for more space beside the toilet.
 - Universal design for left and right hand installation
 - The locking points are at 45° increments as required by the user
 - This product can be installed against walls that have irregular angles

SWING AWAY TOILET RAIL

TYPE T130

Code	Description	
EGT130.S	Basic model	Satin
EGT130.S.TR	With Roll Holder	Satin
EGT130.PC	Basic model	Powdercoated
EGT130.PC.TR	With Roll Holder	Powdercoated



This image shows a full page of white paper with horizontal blue ruling lines. The lines are evenly spaced and run across the width of the page, providing a template for writing or drawing. There are no margins, text, or other markings on the page.

EISEGRIP® TOILET BACKREST

Eisegrip - EGR800



Eisegrip - EGR750



EISEGRIP® TOILET BACKREST

EISEGRIP® EGR800

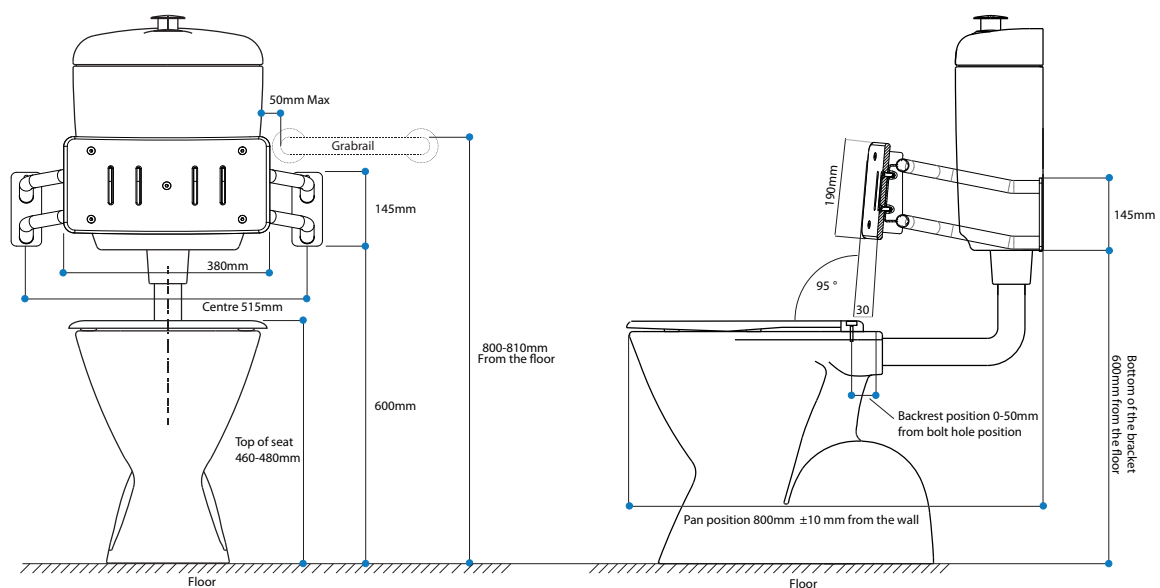
The Eisegrip® Backrest is a premium Australian made product designed to satisfy all the requirements of Australian Standard 1428.1-2009 (Design for Access and Mobility) and the access provisions of the Building Code of Australia 2011.

- Features:**
- Contoured shape and solid mounting provides a comfortable and dignified environment for the user
 - Fully washable white acrylic textured backrest moulding
 - Suitable for Left-hand or Right-hand transfer
 - Electro polished stainless steel structure
- Registered Design No 13607/2011

TOILET BACKREST

TYPE R800

Code	Description
EGR800	Moulded Backrest with Stainless Steel Frame (Grabrail not included) *AS1428



* Compliant with AS1428.1-2009, if installed as per the provisions of the standard

EISEGRIP® TOILET BACKREST

EISEGRIP® EGR750

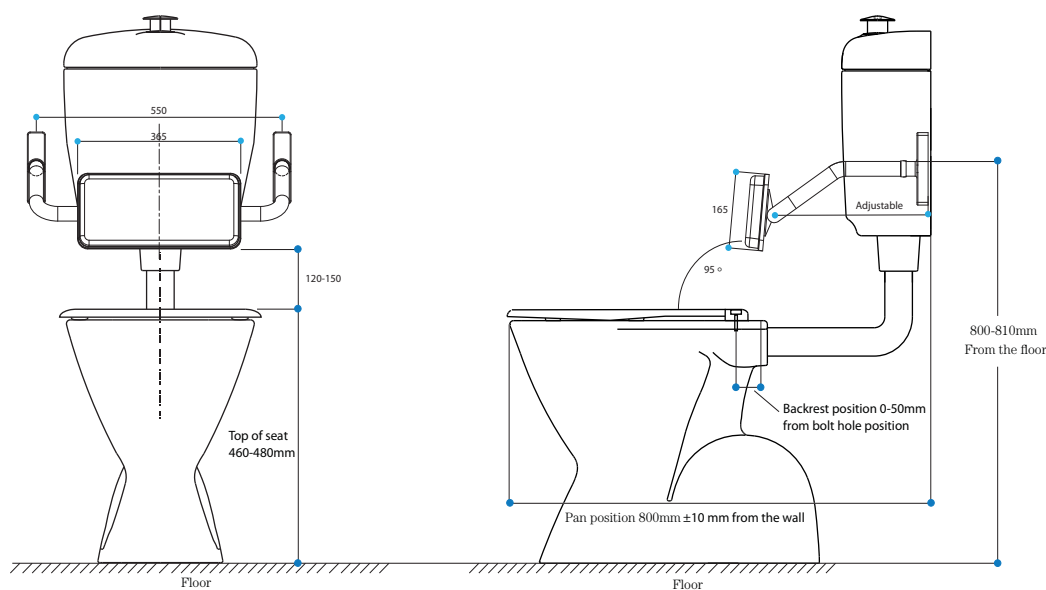
Designed to satisfy all the requirements of Australian Standard 1428.1-2009 (Design for Access and Mobility) and the access provisions of the Building Code of Australia 2011.

- Features:**
- Adjustable (Depth) stainless steel frame 550mm x 160mm
 - Fully washable padded cushion size 365mm x 160mm x 40mm
 - Suitable for Left-hand or Right-hand transfer

TOILET BACKREST

TYPE R750

Code	Description
EGR750	Padded Backrest with adjustable Stainless Steel Frame (Side rail not included)
EGR750.S	Padded Backrest with adjustable Stainless Steel Frame with side rail *AS1428



* Compliant with AS1428.1-2009, if installed as per the provisions of the standard

BACKREST & GRABRAIL COMBO

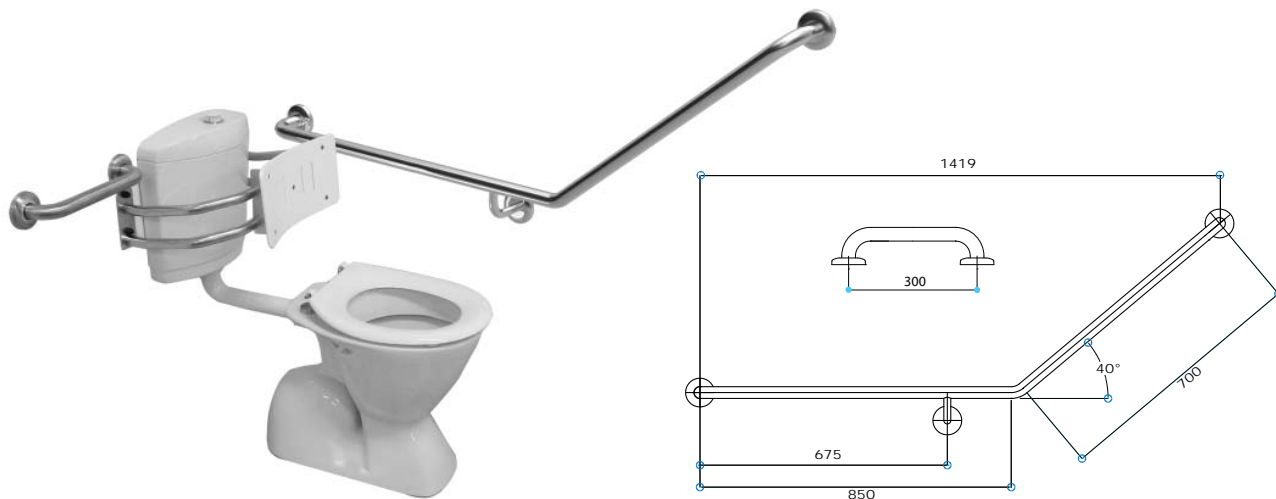
Compliant Stainless Steel Grabrails and Toilet Backrest

40° BEND TOILET GRABRAIL WITH 300MM GRABRAIL

AND R800 BACKREST

TYPE T20 COMBO-B

Code	Description		
EGT20.10CB800	As Shown (Left)	850mm x 700mm	AS1428.1-2009 Accessible *
EGT20.11CB800	Opposite Hand	850mm x 700mm	AS1428.1-2009 Accessible *

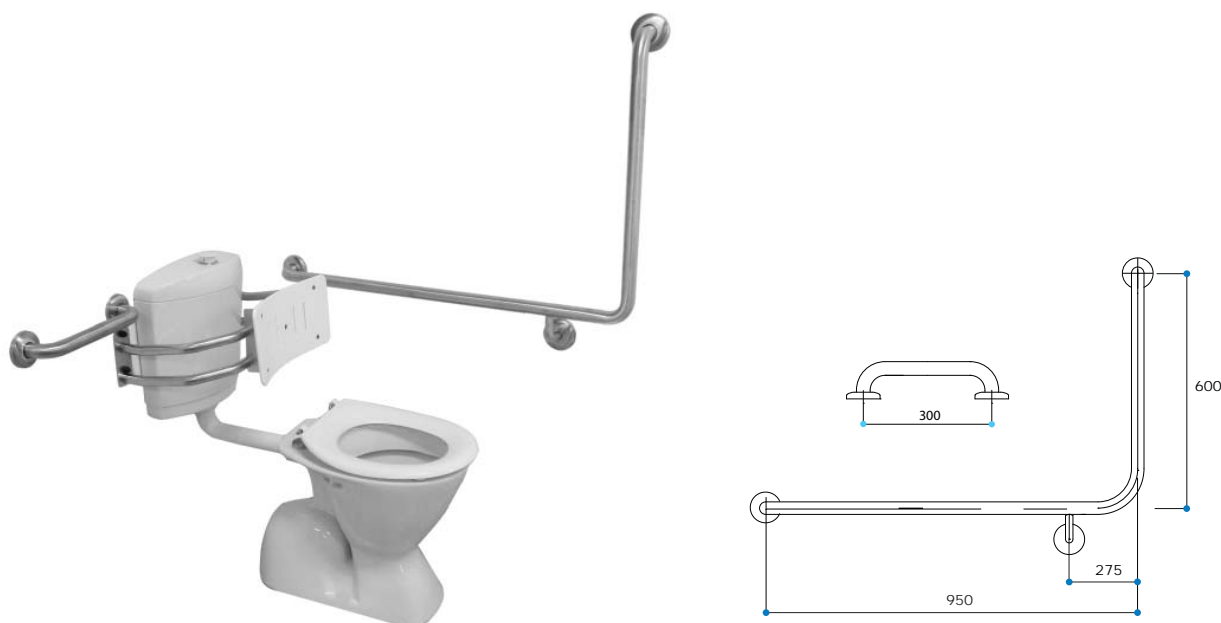


90° BEND TOILET GRABRAIL WITH 300MM GRABRAIL

AND R800 BACKREST

TYPE T14 COMBO-B

Code	Description		
EGT14.20CB800	As Shown (Left)	950mm x 600mm	AS1428.1-2009 Accessible *
EGT14.21CB800	Opposite Hand	950mm x 600mm	AS1428.1-2009 Accessible *



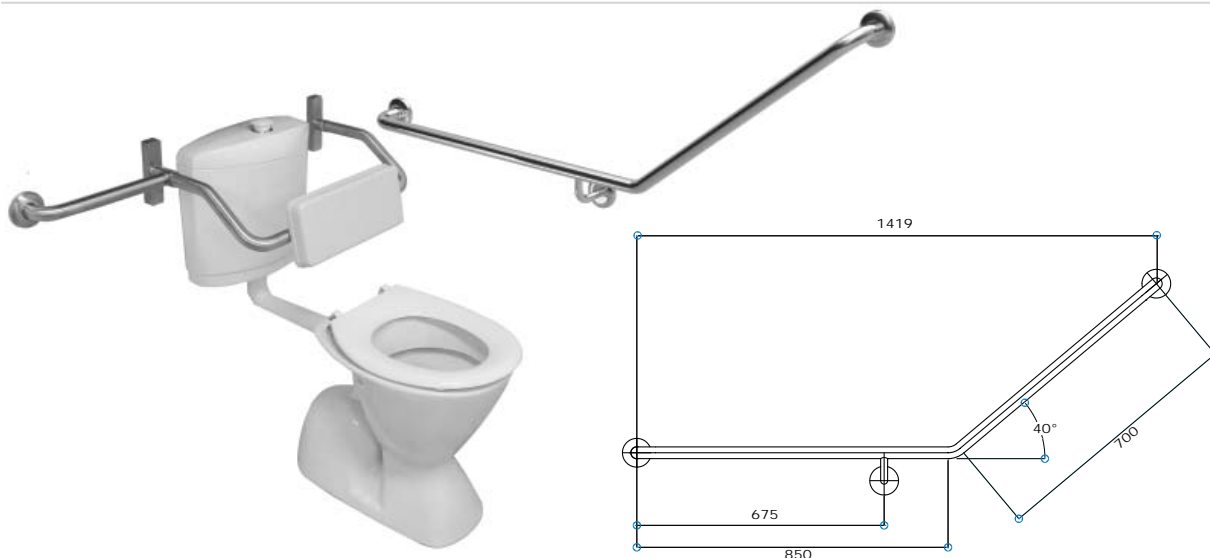
* Compliant with AS1428.1-2009, if installed as per the provisions of the standard

BACKREST & GRABRAIL COMBO

Compliant Stainless Steel Grabrails and Toilet Backrest

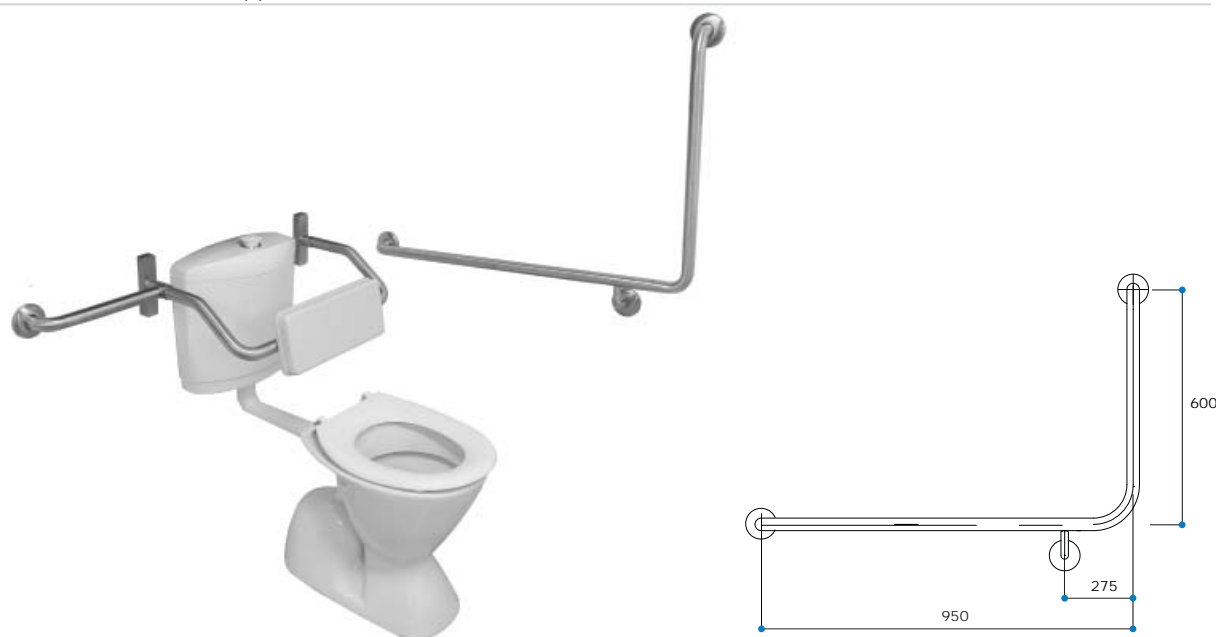
40° BEND TOILET GRABRAIL WITH 300MM CONNECTA GRABRAIL AND R750 BACKREST TYPE T20 COMBO-B

Code	Description		
EGT20.10CB750	As Shown (Left)	850mm x 700mm	AS1428.1-2009 Accessible *
EGT20.11CB750	Opposite Hand	850mm x 700mm	AS1428.1-2009 Accessible *



90° BEND TOILET GRABRAIL WITH 300MM CONNECTA GRABRAIL AND R750 BACKREST TYPE T14 COMBO-B

Code	Description		
EGT14.20CB750	As Shown (Left)	950mm x 600mm	AS1428.1-2009 Accessible *
EGT14.21CB750	Opposite Hand	950mm x 600mm	AS1428.1-2009 Accessible *



* Compliant with AS1428.1-2009, if installed as per the provisions of the standard

[illegible]

32MM BATH GRABRAILS

Stainless Steel Bath Grabrails



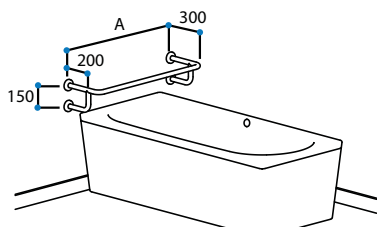
32MM BATH GRABRAILS

Stainless Steel Bath Grabrails

Finish: Satin Stainless

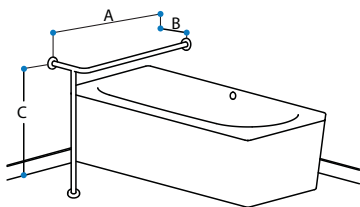
Tube: 32mm

Fixings: Concealed Flanges (Exposed fixings are available to order)



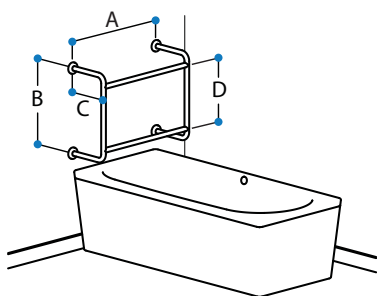
BATH GRABRAIL TYPE B3

Code	Description
EGB3.10.SC	A:800mm



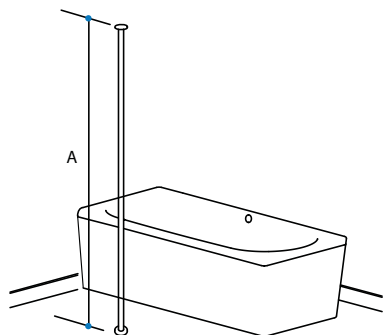
BATH GRABRAIL WITH FLOOR SUPPORT TYPE B4

Code	Description
EGB4.10.SC	A:900mm B:300mm C:800mm



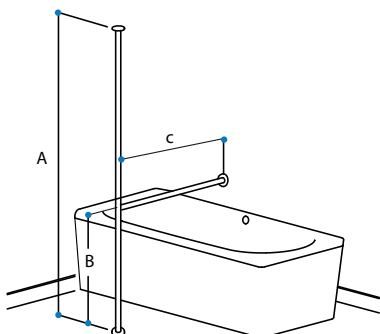
BATH GRABRAIL DOUBLE RAIL TYPE B5

Code	Description
EGB5.10.SC	A:800mm B:600mm C:300mm D:450mm



FLOOR TO CEILING GRAB BAR TYPE B6

Code	Description
EGB6.10.SC	Custom Length

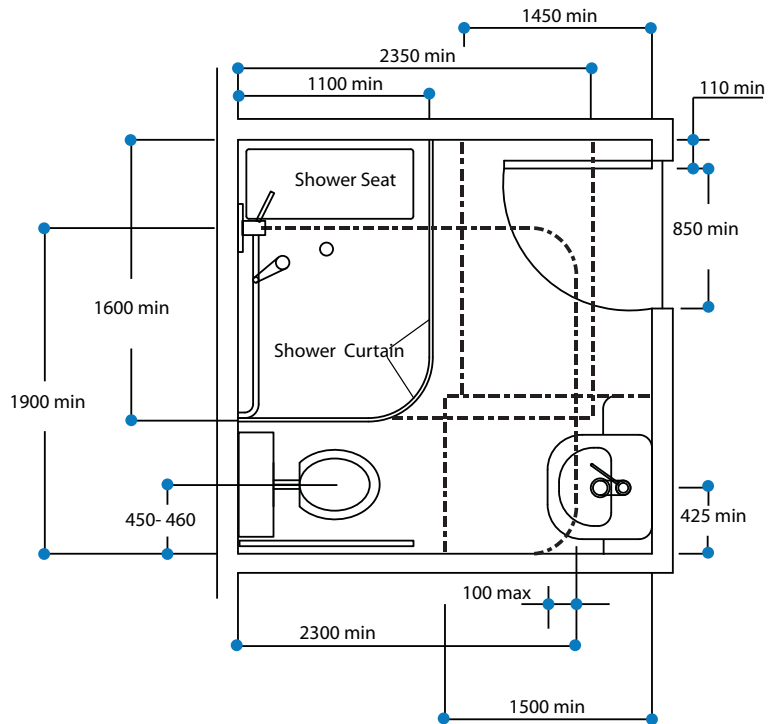


FLOOR TO CEILING GRAB BAR WITH CROSS BAR TYPE B7

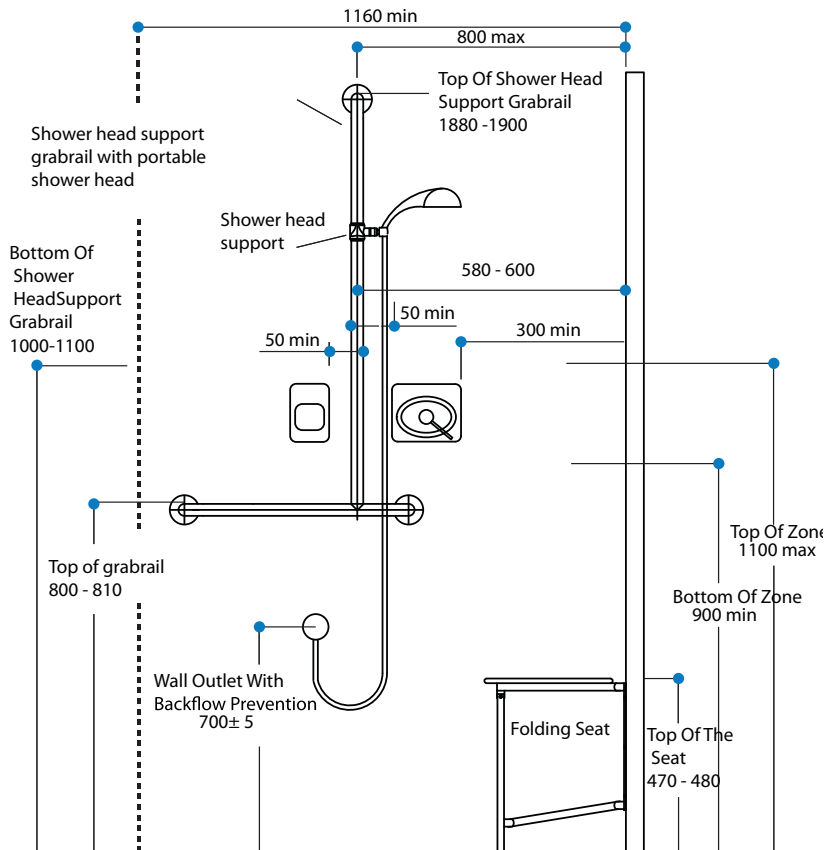
Code	Description
EGB7.10.SC	Custom Length From Wall

SANITARY COMPARTMENT LAYOUT

Combined Sanitary Compartment Showing Overlap Of Washbasin Fixture Into Pan Circulation Space



Shower Recess Fittings - Elevation

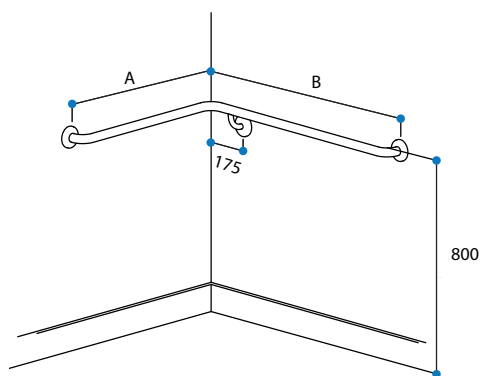


This illustration serves as a guide only. Please consult the Building Code of Australia (BCA)

32MM SHOWER GRABRAILS

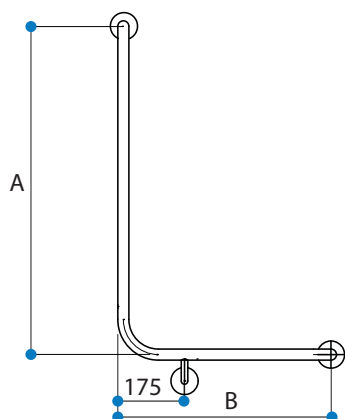
Support Grabrails For General Use

Finish: Satin Stainless (Powder coating available to order for projects)
Tube: 32mm
Fixings: Concealed Flanges (Exposed fixings are available to order)
 Custom rails available to order
 Available with optional fitted sliding shower brackets & sliding soap holders
 (See Following Pages)



CORNER SHOWER GRABRAIL TYPE S22

Code	Description	A	B
EGS22.10.SCX	As Shown (Left)	750mm	1000mm
EGS22.11.SCX	Opposite Hand	750mm	1000mm
EGS22.20.SCX	As Shown (Left)	1000mm	1000mm
EGS22.21.SCX	Opposite Hand	1000mm	1000mm
EGS22.30.SCX	As Shown (Left)	750mm	750mm
EGS22.31.SCX	Opposite Hand	750mm	750mm
EGS22.40.SCX	As Shown (Left)	900mm	900mm
EGS22.41.SCX	Opposite Hand	900mm	900mm



90° BEND SHOWER GRABRAIL TYPE S27

Code	Description	A	B
EGS27.20.SCX	As Shown (Left)	1000mm	600mm
EGS27.21.SCX	Opposite Hand	1000mm	600mm

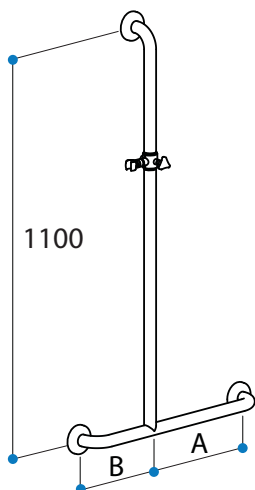
Sliding shower bracket not included.
Optional Extra



32MM SHOWER GRABRAILS

Support Grabrails For General Use

See Following pages for Handshower Kits

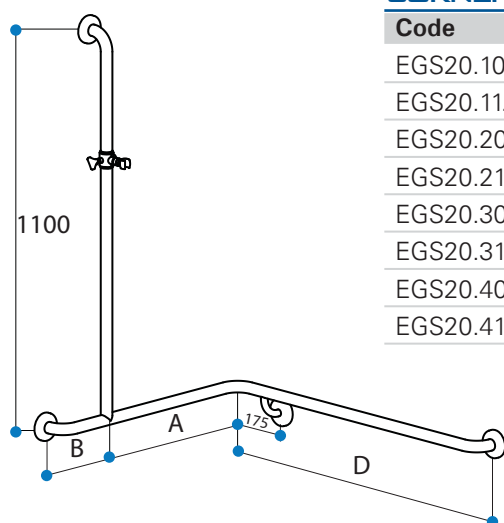


T SHOWER GRABRAIL

TYPE S25

Code	Description	A	B
EGS25.10.SC	As Shown (Left)	400mm	200mm
EGS25.11.SC	Opposite Hand	400mm	200mm
EGS25.20.SC	Centered	300mm	300mm
EGS25.30.SC	As Shown (Left)	500mm	175mm
EGS25.31.SC	Opposite Hand	500mm	175mm

Sliding shower bracket not included.
Optional Extra

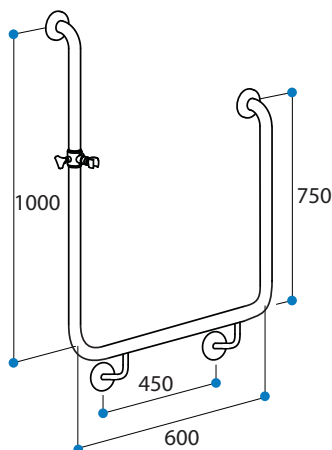


CORNER SHOWER GRABRAIL WITH VERTICAL

TYPE S20

Code	Description	A	B	D
EGS20.10.SCX	As Shown (Left)	580mm	170mm	1000mm
EGS20.11.SCX	Opposite Hand	580mm	170mm	1000mm
EGS20.20.SCX	As Shown (Left)	580mm	420mm	1000mm
EGS20.21.SCX	Opposite Hand	580mm	420mm	1000mm
EGS20.30.SCX	As Shown (Left)	450mm	300mm	750mm
EGS20.31.SCX	Opposite Hand	450mm	300mm	750mm
EGS20.40.SCX	As Shown (Left)	580mm	320mm	900mm
EGS20.41.SCX	Opposite Hand	580mm	320mm	900mm

Sliding shower bracket not included.
Optional Extra



U - SHAPED SHOWER GRABRAIL LIBERTY BAR

Code	Description	Horizontal	Vertical
DLIB1000L	As Shown (Left)	600mm	1000mm & 750mm
DLIB1000R	Opposite Hand	600mm	1000mm & 750mm

Sliding shower bracket not included.
Optional Extra



32MM SHOWER GRABRAILS

Designs For Accessible Sanitary Facilities

See Following pages for Handshower Kits

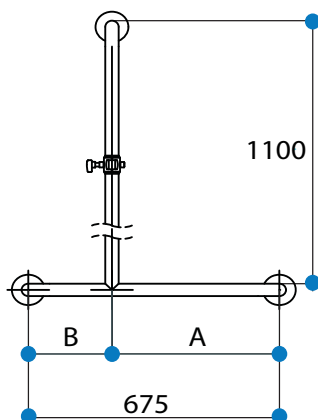


STRAIGHT GRABRAIL

Code	Description	Vertical
CS32800	32mm x 800mm	800mm
CS32900	32mm x 900mm	900mm

For accessible applications to AS1428.1-2009 and general use

Sliding shower bracket not included.
Optional Extra



T SHOWER GRABRAIL

TYPE S25

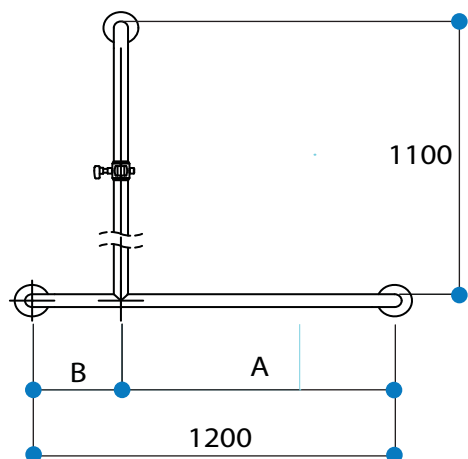
Code	Description	A	B
EGS25.30.SC	As Shown (Left)	500mm	175mm
EGS25.31.SC	Opposite Hand	500mm	175mm

For accessible applications to AS1428.1-2009 and general use

Sliding shower bracket not included.
Optional Extra



For Accessible Showers with Overlapping Circulation Space in Sanitary Compartments



T SHOWER GRABRAIL

TYPE S26

Code	Description	A	B
EGS26.10.SC	As Shown (left)	1025mm	175mm
EGS26.11.SC	Opposite Hand	1025mm	175mm

For accessible applications to AS1428.1-2009 and general use

Sliding shower bracket not included.
Optional Extra



Compliant with AS1428.1-2009, if installed as per the provisions of the standard

32MM CONNECTA-RAIL

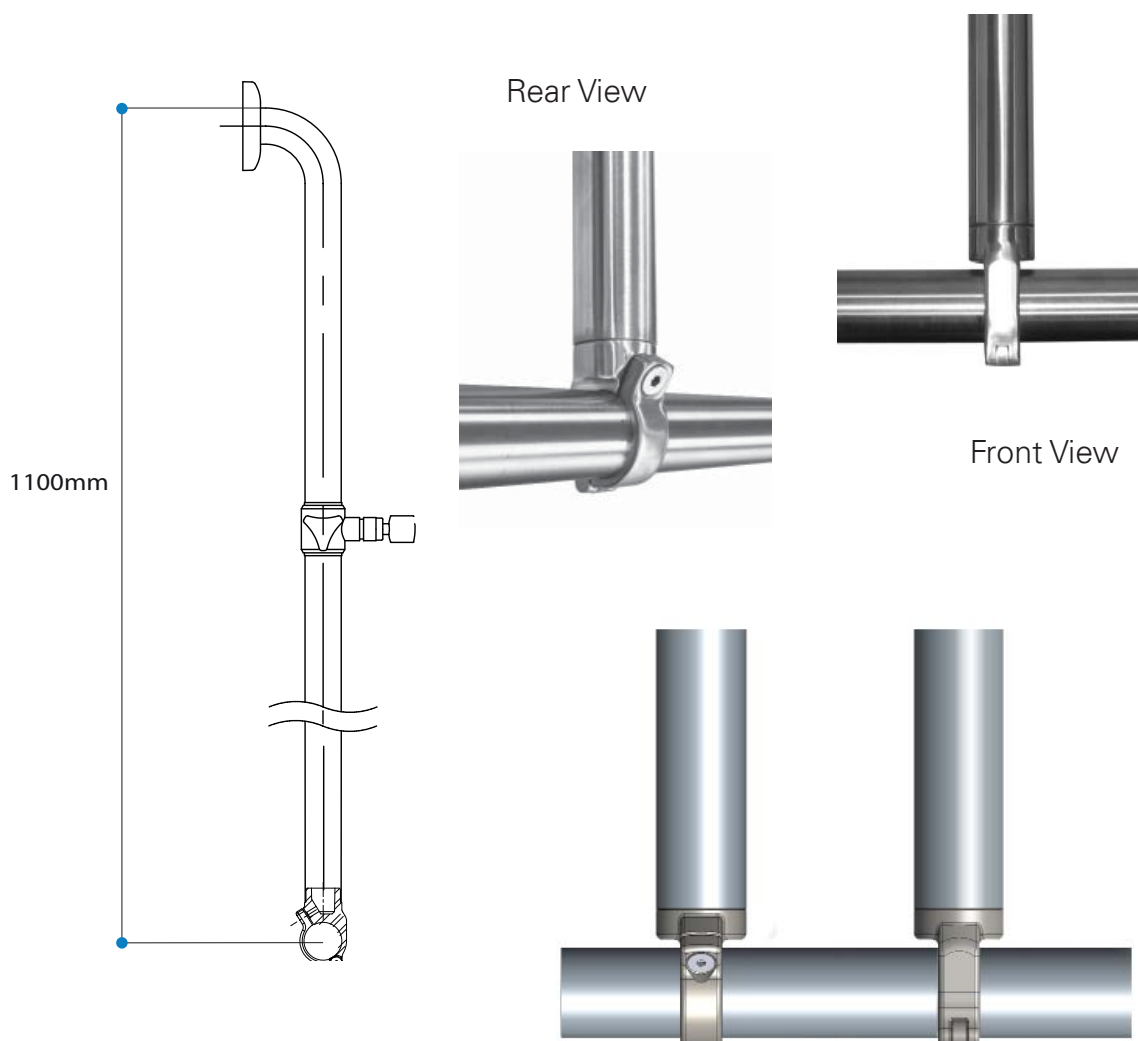
Vertical Shower Grabrail

The Connecta-rail was designed so that the vertical shower grabrail can be placed in a position of choice, making the installation process a lot less cumbersome for the builder. Used with corner shower grabrail, straight horizontal grabrail and many other applications where a perpendicular rail is required.

- Features:**
- Easy to attach to grabrail
 - Universally suitable for left hand or right hand installation
 - No Sharp Edges - User friendly
 - Easier to transport
 - Manufactured using 304 grade Stainless Steel
- Registered Design No 14407/2012

VERTICAL SHOWER GRABRAIL TYPE S10

Code	Description
EGS10.SCA	Vertical Shower Grabrail with Connecta

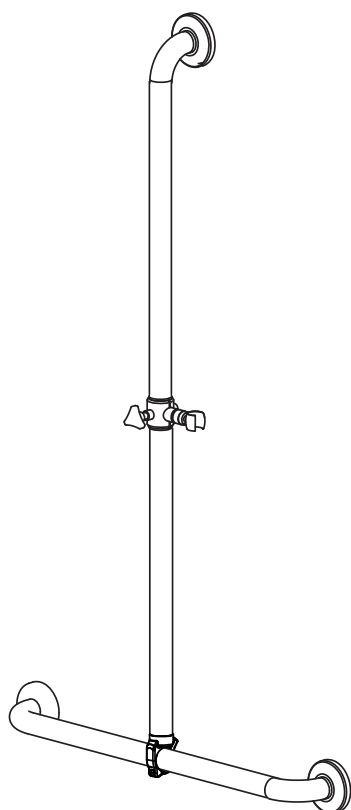
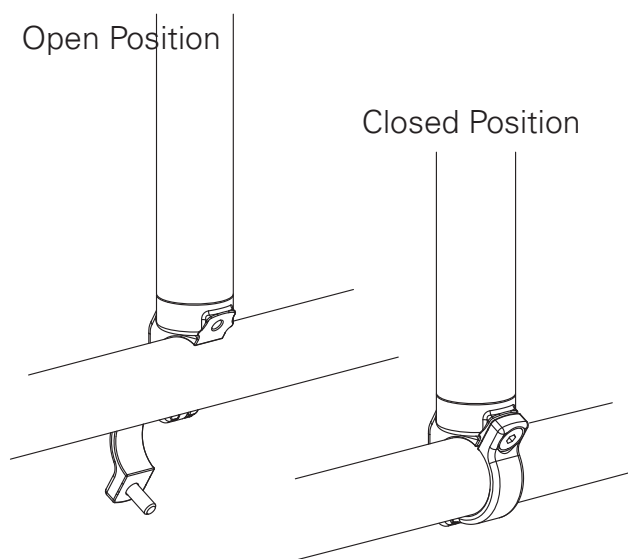


32MM CONNECTA-RAIL

Vertical Shower Grabrail

The connecta rail can be fitted to most horizontal 32mm Shower Grab rails

Easy to install.



STRAIGHT GRABRAIL WITH VERTICAL CONNECTA TYPES25 / S26

Code	Description
EGS25.10.SCCR	600mm Straight Grabrail
EGS25.30.SCCR	675mm Straight Grabrail
EGS26.10.SCCR	1200mm Straight Grabrail
Or select any straight grabrail	
CS32750	750mm Straight Grabrail
CS32800	800mm Straight Grabrail
CS32900	900mm Straight Grabrail

- Select your straight rail
- Determine the Required position
- Connect the Connecta-Rail EGS10.SCA

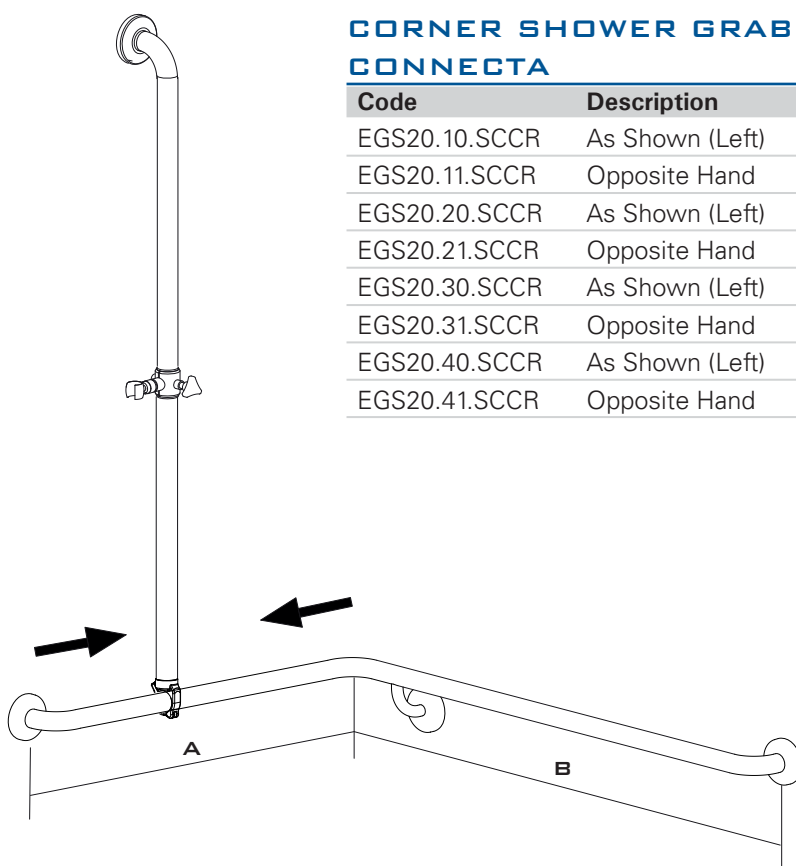
32MM CONNECTA-RAIL

Vertical Shower Grabrail

Sliding shower bracket not included.
Optional Extra



- Select your horizontal corner shower rail
- Determine the required position
- Connect the Connecta-Rail EGS10.SCA



**CORNER SHOWER GRABRAIL WITH VERTICAL
CONNECTA TYPE S20**

Code	Description	A	B
EGS20.10.SCCR	As Shown (Left)	750mm	1000mm
EGS20.11.SCCR	Opposite Hand	750mm	1000mm
EGS20.20.SCCR	As Shown (Left)	1000mm	1000mm
EGS20.21.SCCR	Opposite Hand	1000mm	1000mm
EGS20.30.SCCR	As Shown (Left)	750mm	750mm
EGS20.31.SCCR	Opposite Hand	750mm	750mm
EGS20.40.SCCR	As Shown (Left)	900mm	900mm
EGS20.41.SCCR	Opposite Hand	900mm	900mm

[illegible]

ADJUSTABLE SHOWER SLIDING BRACKETS

Premier Accessories To Fit 32mm Grabrails

Features:

- Manufactured using sturdy high quality brass fittings
- Versatile adjustable claw, designed to suit conical shower hose fittings
- Easy one hand motion to raise or lower the sliding bracket
- Suitable for any Axxess Trading 32mm grabrails including powder coated finish



SLIDING SHOWER BRACKET

Code	Description
EGHR.SH	Chrome Plated Brass



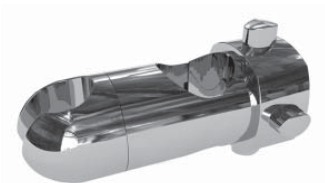
SLIDING SOAP DISH

Code	Description
EGHR.SD	Chrome Plated Brass

General Accessories To Fit 32mm Grabrails

Features:

- Manufactured from chrome plated durable ABS
- Adjustable bracket, designed to suit conical shower hose fittings
- Ergonomic design allows easy adjustment of clamping pressure when needed
- Easy one hand motion to raise or lower the sliding bracket
- Suitable for any Axxess Trading 32mm shower grabrail
- Simple to disassemble for easy cleaning



SLIDING SHOWER BRACKET

Code	Description
EGHRA.SH	Chrome Plated ABS



SLIDING SOAP DISH

Code	Description
EGHRA.SD	Chrome Plated ABS

32MM GRABRAIL & HANDSHOWER KITS

EISEGRIP® Hand Shower Kits

EISEGRIP
Since 1977



Standard Eisegrip® Hand Shower Kit Includes:

Handheld shower
Designer supply elbow
Hose
Combined flow restrictor and backflow prevention valve

Options:

Colour - White or Chrome
Handshower - Dada or Riva
Hose - 1.5m or 2.0m
Quality EGHR premier sliding shower bracket

EGHSK03 (Chrome Riva)



EGHSK04 (White - Dada)



EGHSK04 (Chrome Dada)



Reinforced European Hoses



1.5m Euroflex Smooth Flexible Vinyl Hose - (Chrome)



2.0m Euroflex Smooth Flexible Vinyl Hose - (Chrome)



1.5m Europlas Smooth Flexible Vinyl Hose (White)



2.0m Europlas Smooth Flexible Vinyl Hose (White)



1.5m Metalflex Double Interlock Stainless Steel Hose



2.0m Metalflex Double Interlock Stainless Steel Hose

32MM GRABRAIL & HANDSHOWER KITS

EISEGRIP® Kits

Flat Pack Kits available - See Connecta Rail



STRAIGHT GRABRAIL

KIT 1

Code	Description	
EGKIT1.750	750mm Grabrail	General use
EGKIT1.800	800mm Grabrail	Accessible Use *
EGKIT1.900	900mm Grabrail	Accessible Use *

Please select preferred handshower kit



T SHOWER GRABRAIL TYPE S25

KIT 3

Code	Description	Horizontal	
EGKIT3.30	As Shown (Left)	675mm (175-500)	Accessible Use *
EGKIT3.31	Opposite Hand	675mm (175-500)	Accessible Use *

Please select preferred handshower kit



For Accessible Shower with overlapping Circulation Space in Sanitary Compartment

T SHOWER GRABRAIL TYPE S26

KIT 3

Code	Description	Horizontal	
EGKIT3.40	As Shown (Left)	1200mm (175-1025)	Accessible Use *
EGKIT3.41	Opposite Hand	1200mm (175-1025)	Accessible Use *

Please select preferred handshower kit



CORNER SHOWER GRABRAIL TYPE S20

KIT 4

Code	Description	Horizontal	
EGKIT4.10	As Shown (Left)	750mm x 1000mm	General use
EGKIT4.11	Opposite Hand	750mm x 1000mm	General use
EGKIT4.20	As Shown (Left)	1000mm x 1000mm	General use
EGKIT4.21	Opposite Hand	1000mm x 1000mm	General use
EGKIT4.30	As Shown (Left)	750mm x 750mm	General use
EGKIT4.31	Opposite Hand	750mm x 750mm	General use
EGKIT4.40	As Shown (Left)	900mm x 900mm	General use
EGKIT4.41	Opposite Hand	900mm x 900mm	General use

Please select preferred handshower kit

* Compliant with AS1428.1-2009, if installed as per the provisions of the standard

32MM GRABRAIL & HANDSHOWER KITS

Delrana Luxury Showers



DELRANA DADA HANDSHOWER SYSTEM

SYS14H

Code	Description
SYS14H750.W	750mm Grabrail with SYS14WD Handshower Set - White
SYS14H800.W	800mm Grabrail with SYS14WD Handshower Set - White
SYS14H900.W	900mm Grabrail with SYS14WD Handshower Set - White
SYS14H750.C	750mm Grabrail with SYS14CPD Handshower Set - Chrome
SYS14H800.C	800mm Grabrail with SYS14CPD Handshower Set - Chrome
SYS14H900.C	900mm Grabrail with SYS14CPD Handshower Set - Chrome

Supplied With:

Selected Grabrail
 Dada hand held shower
 Flow restrictor & check valve
 Chrome or white smooth flexible vinyl hose
 Chrome supply elbow
 Quality sliding shower bracket

Options:

Colour - White or Chrome
 Hose - 1.5m or 2.0m

Other hand showers are available in this system.
 Please speak to our sales staff.



32MM GRABRAIL, SLIDING SHOWER BRACKET & SOAP DISH

Code	Description
RAH110.750	Marlin - Chrome
RAH210.750	Riva - Chrome
RAH230.750	Piper - Chrome
RAH14.750	Dada - Chrome

Supplied With:

Selected Handshower
 32mm sliding shower bracket
 Stainless Steel metalflex hose or
 Europlas vinyl hose
 32mm Grabrail
 Chrome supply elbow
 32mm sliding soap Holder

Options:

Colour - White or Chrome
 Hose - 1.5m or 2.0m
 Grabrail - 750mm or 900mm



**** Where Flow Rate is not shown
 please turn to hand held shower pages
 and refer to selected hand shower.**

HAND HELD SHOWERS

HAND HELD SHOWERS

Single Spray Hand Shower



MARLIN SINGLE SPRAY HAND SHOWER 8.5 L/MIN

Code	Description
HH110C PHP	Marlin Hand Shower - Chrome

A quality single spray shower with focused spray and self cleaning rubber nozzles. Easy and light to handle. Suitable for everyday use, hospitals, nursing homes & home modifications.

Shower Head Size 65mm

Water Saving, WELS 3 star 8.5 L/min

Colour options: Chrome



DADA HEALTH CARE HAND SHOWER 8.0 L/MIN

Code	Description
HHSYS14A	Dada Hand Shower - White
HHSYS14AC	Dada Hand Shower - Chrome

A single spray shower featuring a gentle spray. Very comfortable and light to hold. Specified by architects for hospitals and nursing homes. It is usually fitted with a 1.5 or 2m vinyl hose.

Shower Head Size 70mm

Water Saving, WELS 3 star 8.0 L/min

Colour options: Chrome or White



HAND HELD SHOWERS

Single Spray Hand Shower



RIVA SINGLE SPRAY HANDSHOWER 8.5 L/MIN

Code	Description
HH210CPHP	Riva Hand Shower - Chrome



A light modern single spray handshower with a strong spray.

Suitable for every day use and gravity fed hot water systems.

Shower Head Size 103mm

Water Saving, WELS 3 star 8.5 L/min

Colour options: Chrome



Multi Spray Hand Shower



PIPER 3-FUNCTION ADJUSTABLE SPRAY HANDSHOWER 7.5 L/MIN

Code	Description
HH230CPHP	Piper Hand Shower - Chrome



A Versatile Massage, fine spray or combination hand shower, with strong massage action.

Comfortable drenching shower

Shower Head Size 85mm

Water Saving, WELS 3 star 7.5 L/min

Colour options: Chrome



DELRANA HAND SHOWER SETS

Our standard hand shower systems are supplied with 2.0m hoses or as indicated. 1.5m hoses are available on request. The double interlock stainless steel hose is generally used with all chrome hand showers, however vinyl hoses in white or chrome are also available. The white Europlas reinforced vinyl hose can be custom made to your required length.

Should you not find your kit combination in the following pages, please let us know how we can help.



HAND SHOWER WITH PUSH-PULL SWITCHCOCK

Code	Description
SYS110CPC	Marlin - Chrome
SYS210CPC	Riva - Chrome
SYS230CPC	Piper - Chrome

Supplied With:

Preferred Handshower	Swivel Elbow
Switchcock (Push Pull)	2.0m Metalflex Hose
Wall Hook	



HAND SHOWER WITH LEVER SWITCHCOCK

Code	Description
SYS110CPCL	Marlin - Chrome
SYS210CPCL	Riva - Chrome
SYS230CPCL	Piper - Chrome

Supplied With:

Preferred Handshower	Swivel Elbow
Switchcock (Lever)	2.0m Metalflex Hose
Wall Hook	



HAND SHOWER WITH LEVER SWITCHCOCK

Code	Description
SYSHH110CPCL	Marlin - Chrome
SYSHH210CPCL	Riva - Chrome
SYSHH230CPCL	Piper - Chrome

Supplied With:

Preferred Handshower	2.0m Metalflex Hose
Switchcock (Lever)	
2 position Bracket	

Option - Self Adhesive Shower Bracket

**** Where Flow Rate is not shown please turn to hand held shower pages and refer to selected hand shower.**

DELRANA HAND SHOWER SETS



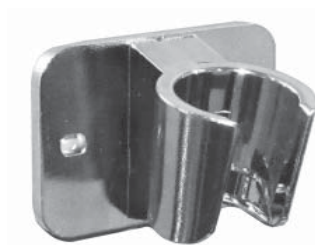
HAND SHOWER ON ADJUSTABLE SUPPLY BRACKET WITH SELF-ADHESIVE BRACKET

Code	Description
SYS110CPSBA	Marlin - Chrome
SYS210CPSBA	Riva - Chrome
SYS230CPSBA	Piper - Chrome

Supplied With:

Preferred Hand Shower	Self-Adhesive Bracket
Easyfit Shower Bracket	2.0m Metalflex Hose

Optional Extra - Self Adhesive Shower Bracket



NOTES

This image shows a blank sheet of white paper with horizontal ruling lines. The lines are evenly spaced and run across the width of the page. There are no margins, text, or other markings on the paper.

**** Where Flow Rate is not shown please turn to hand held shower pages and refer to selected hand shower.**

DELRANA HAND SHOWER SETS



HAND SHOWER WITH SELF HOOK SUPPLY ELBOW

Code	Description
SYS110CPA	Marlin - Chrome WELS 3 Star 8.0L/min
SYS210CPA	Riva - Chrome
SYS230CPA	Piper - Chrome
SYS210CPAG	Riva - Chrome WELS 3 Star 5.0L/min Low Pressure

Supplied With:

Preferred Handshower	Swivel Elbow
Pinned Supply Elbow	2.0m Metalflex Hose
Wall Hook	



HAND SHOWER WITH WALL HOOK

Code	Description
SYS110CPA3	Marlin - Chrome
SYS210CPA3	Riva - Chrome
SYS230CPA3	Piper - Chrome

Supplied With:

Preferred Handshower	2.0m Metalflex Hose
Swivel Elbow	
Wall Hook	



HAND SHOWER - FOR USE WITH RAIL SHOWER / GRABRAIL & SLIDING SHOWER BRACKET

Code	Description
SYS110CPD	Marlin - Chrome
SYS210CPD	Riva - Chrome
SYS230CPD	Piper - Chrome
SYS14CPD	Dada - Chrome WELS 3 Star 8.0L/min
SYS14WD	Dada - White WELS 3 Star 8.0L/min

Supplied With:

Preferred Handshower	2.0m Metalflex / or white
Supply Elbow	2.0m Europlas Vinyl Hose

**** Where Flow Rate is not shown please turn to hand held shower pages and refer to selected hand shower.**

DELRANA HAND SHOWER SETS



HAND SHOWER FOR USE WITH RAIL SHOWER / GRABRAIL & SLIDING SHOWER BRACKET

SYS110CPDX	Marlin - Chrome	Designer Elbow
SYS210CPDX	Riva - Chrome	Designer Elbow
SYS230CPDX	Piper - Chrome	Designer Elbow
SYS250CPDX	Caspian - Chrome	Designer Elbow
SYS14CPDX	Dada - Chrome	Designer Elbow
EGHSK04.20W	Dada - White	Designer Elbow

Supplied With:

Preferred Handshower	2.0m Metalflex / or white
Designer Elbow	2.0m Europlas Vinyl Hose



HAND SHOWER WITH PREMIER SLIDING SHOWER BRACKET FOR 32MM GRABRAIL

Code	Description
SYS110CPRET	Marlin - Chrome
SYS210CPRET	Riva - Chrome
SYS230CPRET	Piper - Chrome
SYS14CPRET	Dada - Chrome
SYS14WRET	Dada - White

Supplied With:

Preferred Handshower	Chrome Plated Brass
Supply Elbow	Retrofit Slider
Wall Plate	2.0m Metalflex / or white
	2.0m Europlas Vinyl Hose



HAND SHOWER WITH ABS SLIDING SHOWER BRACKET FOR 32MM GRABRAIL

Code	Description
SYS110CPRETAB	Marlin - Chrome
SYS210CPRETAB	Riva - Chrome
SYS230CPRETAB	Piper - Chrome
SYS14CPRETAB	Dada - Chrome
SYS14WRETAB	Dada - White

Supplied With:

Preferred Handshower	Chrome Plated ABS
Supply Elbow	Retrofit Slider
Wall Plate	2.0m Metalflex / or white
	2.0m Europlas Vinyl Hose

**** Where Flow Rate is not shown please turn to hand held shower pages and refer to selected hand shower.**

EISEGRIP HAND SHOWER KITS

RIVA Chrome



DADA Chrome



DADA White



EISEGRIP HANDSHOWER KIT



Code	Description	
EGHSK03.15C	Riva - Chrome	1.5m Hose
EGHSK03.20C	Riva - Chrome	2.0m Hose
EGHSK04.15C	Dada - Chrome	1.5m Hose
EGHSK04.20C	Dada - Chrome	2.0m Hose
EGHSK04.15W	Dada - White	1.5m Hose
EGHSK04.20W	Dada - White	2.0m Hose

Colour Options: Chrome or White

Supplied With:

Preferred Handshower
Designer Elbow

Flow Restrictor & Check Valve
Euroflex Chrome Hose or
Europlas White Hose

EISEGRIP HANDSHOWER KIT WITH HR SLIDER



Code	Description	
EGHSKR03.15C	Riva - Chrome	1.5m Hose
EGHSKR03.20C	Riva - Chrome	2.0m Hose
EGHSKR04.15C	Dada - Chrome	1.5m Hose
EGHSKR04.20C	Dada - Chrome	2.0m Hose
EGHSKR04.15W	Dada - White	1.5m Hose
EGHSKR04.20W	Dada - White	2.0m Hose

Colour Options: Chrome or White

Supplied With:

Preferred Handshower
Designer Elbow
Chrome Plated Brass Retrofit Slider

Flow Restrictor & Check Valve
Euroflex Chrome Hose or
Europlas White Hose

DELRANA RAIL SETS



DELRANA RAIL SETS

Hand Shower on 32mm Grabrail



HAND SHOWER ON 32MM GRABRAIL

Code	Description
RAH110.750	Marlin - Chrome
RAH210.750	Riva - Chrome
RAH230.750	Piper - Chrome
RAH14.750	Dada - Chrome

Supplied With:

Preferred Handshower	Chrome Supply Elbow
32mm Sliding Shower Bracket	32mm Sliding Soap Holder
Stainless Steel Metalflex Hose or	
Europlas Vinyl Hose	
32mm Grabrail	

Options:

Colour	- White or Chrome
Hose	- 1.5m or 2.0m
Grabrail	- 750mm or 900mm



32MM GRABRAIL SET - not including handshower

Code
RAH750.RA
RAH900.RA

Supplied With:

32mm Grabrail
32mm Sliding Shower Bracket
32mm Sliding Soap Holder

**** Where Flow Rate is not shown please turn to hand held shower pages and refer to selected hand shower.**

DELRANA RAIL SETS

Hand Shower on Akira Rail

HAND SHOWER ON AKIRA RAIL 1.5M HOSE

Code	Description
RAA110CPX	Marlin - Chrome
RAA210CPX	Riva - Chrome
RAA230CPX	Piper - Chrome



Supplied With:

Preferred Handshower	Sliding Soap Dish
Akira Rail	Sliding Shower Bracket
Designer Supply Elbow	1.5m Metalflex Hose

This rail set comes standard with a 1.5m hose, 2.0m Hoses are available on request

**** Where Flow Rate is not shown please turn to hand held shower pages and refer to selected hand shower.**

DELRANA WALL SHOWERS

Single Spray Shower



MARLIN SINGLE SPRAY SHOWER ROSE 8.5 LITRES PER MINUTE

Code	Description
R110CP	Marlin Shower Rose - Chrome

- Strong focused spray
- A quality modern single spray shower with self cleaning rubber nozzles
- Water saving, WELS 3 star 8.5 L/min
- Energy saving
- High quality brass ball joint

Colour Options: Chrome



Shower Rose on Fixed Arm



MARLIN SINGLE SPRAY SHOWER ROSE ON FIXED ARM

Code	Description
R110FCP	Marlin Rose - Chrome

Shower Rose on High Rise Arm



MARLIN SINGLE SPRAY SHOWER ROSE ON ALL DIRECTIONAL ARM

Code	Description
R110ACP	Marlin Rose - Chrome

DELRANA SHOWER ACCESSORIES



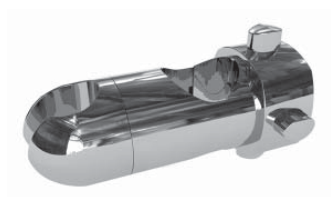
PREMIER SLIDING SHOWER BRACKET FITS 32MM GRAB RAIL

Code	Description
EGHR.SH	Chrome Plated Brass (RA017RETCP)



PREMIER SLIDING SOAP DISH FITS 32MM GRAB RAIL

Code	Description
EGHR.SD	Chrome Plated Brass



SLIDING SHOWER BRACKET FITS 32MM GRAB RAIL

Code	Description
EGHRA.SH	Chrome Plated ABS (RA017SH)



SLIDING SOAP DISH FITS 32MM GRAB RAIL

Code	Description
EGHRA.SD	Chrome Plated ABS (RA017SD)



ALL DIRECTIONAL ARM HEAVY DUTY DOUBLE CLUTCH

Code	Description
AR011	Chrome Plated Brass

DELRANA SHOWER ACCESSORIES



SWIVEL ELBOW

Code	Description
EL001	Chrome Plated Brass



WALL HOOK

Code	Description
AC010	Chrome Plated Brass



SELFHOOK SUPPLY ELBOW

Code	Description
EL011	Chrome Plated Brass

Optional backflow prevention



SUPPLY ELBOW

Code	Description
EL021	Chrome Plated Brass
EL031	Chrome Plated Brass With Backflow Prevention Valve

Optional backflow prevention



WALL PLATE

Code	Description
M1002/SS/ B	Stainless Steel Flat Wall Flange 15mm BSP
M1003SS	Stainless Steel - 9mm Wall Flange



DESIGNER SUPPLY ELBOW

Code	Description
EL041	Chrome Plated Brass

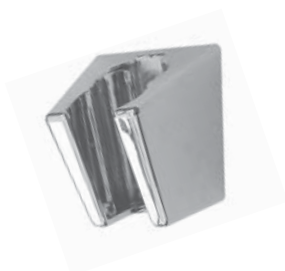
Optional backflow prevention

DELRANA SHOWER ACCESSORIES



SUPPLY ELBOW WITH HANDSHOWER HOLDER

Code	Description
EL052	Chrome Plated Brass



2 POSITION BRACKET

Code	Description
AC030	Chrome Plated ABS



SELF ADHESIVE SINGLE POSITION SHOWER BRACKET

Code	Description
AC032	Chrome Plated ABS



ADJUSTABLE SHOWER WALL BRACKET

Code	Description
AC035	Chrome Plated ABS



SWITCHCOCK - PUSH PULL

Code	Description
AC003	Chrome Plated Brass



SWITCHCOCK - LEVER TYPE

Code	Description
AC004	Chrome Plated Brass

DELRANA SHOWER ACCESSORIES



QUICK RELEASE SHOWER HOSE COUPLINGS WITH AUTO WATER SHUT OFF

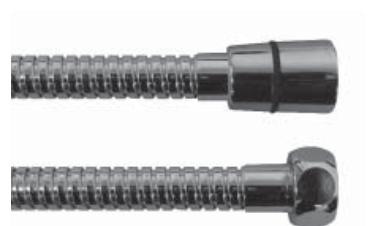
Code	Description
AC070	1/2" BSP Coupling (Female) With Water Stop
AC071	1/2" BSP Coupling (Female)

Features:

AC070 - Used to disconnect hand held shower hose from water supply and water supply is sealed off at elbow.

AC071 - Used to disconnect hand held shower hose from water supply when supply is discontinued at the tap.

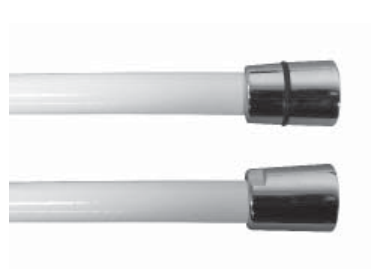
SHOWER HOSES



METALFLEX HOSE

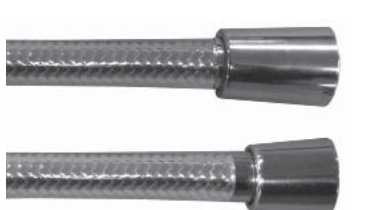
DOUBLE INTERLOCKED STAINLESS STEEL

Code	Description	Finish
HS001	1.5 meter	Chrome
HS016	2.0 meter	Chrome
HS020	2.0 meter	Chrome Large Bore



EUROPLAS SMOOTH RE-INFORCED VINYL

Code	Description	Finish
HS000	Custom length up to 2m	White
HS012	2.0 meter	White
HS015	1.5 meter	White



EUROFLEX SMOOTH RE-INFORCED VINYL

Code	Description	Finish
HS20.CS	2.0 meter	Chrome
HS15.CS	1.5 meter	Chrome



DELRANA SHOWER ACCESSORIES



SWIVEL TWO SPRAY AERATOR SUITABLE FOR KITCHEN OR LAUNDRY

Code	Description
SA001	Chrome-Black

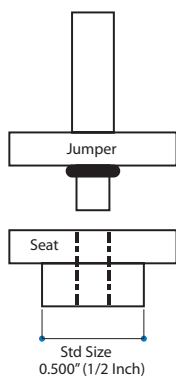
Suitable for Kitchen or Laundry Taps It Swivels
 It Sprays
 It SAVES Water



LO-FLO FLOW CONTROL VALVE

Code	Description
AC007	Chrome Plated Brass

EQUALIZER



EQUALIZER - WATERSAVING & EASY TO FIT

Code	Description
EQU001	2 Sets Per Pack
EQU012	20 Sets Per Pack (Trade Pack)

Features

- Equalisers water pressure, especially with gravity or instantaneous hot water systems
- The Equaliser positively stops leaking taps!
- Made from Acetal Resin
- lasts more than 20 years
- Made in Australia



EQUALIZER EXTRAS

Code	Description
EQU020	Equalizer - Valve Only Std Size
EQU030	Equalizer - Seat Only Std Size 0.500 (1/2 Inch)
EQU032	Equalizer - Seat Only Oversize + 0.010" Blue
EQU033	Equalizer - Seat Only Oversize + 0.015" Green

FOLD AWAY SHOWER SEATS

White Powdercoated Frame

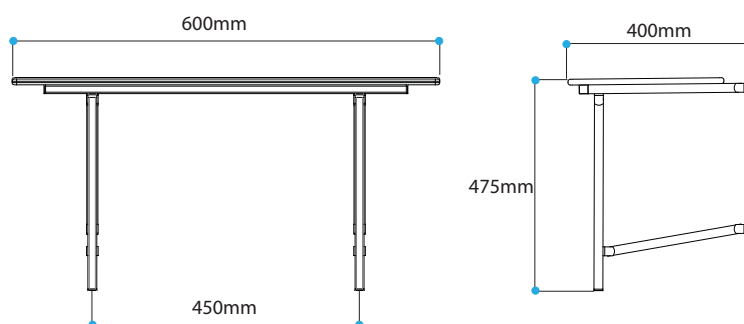
TRADITIONAL SHOWER SEAT

Code	Description		
SHS600	600mm	White Powdercoated Stainless Steel Frame	For General Use



Features:

- White powdercoated frame
- Made in Australia
- White Acrylic slip-resistant top
- Drainage slots



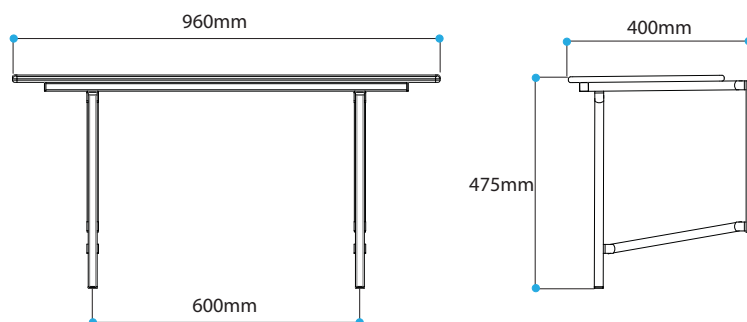
TRADITIONAL SHOWER SEAT

Code	Description		
SHS960	960mm	White Powdercoated Stainless Steel Frame	*Complies with AS1428.1-2009



Features:

- White powdercoated frame
- Made in Australia
- White Acrylic slip-resistant top
- Drainage slots



* Compliant with AS1428.1-2009, if installed as per the provisions of the standard

FOLD AWAY SHOWER SEATS

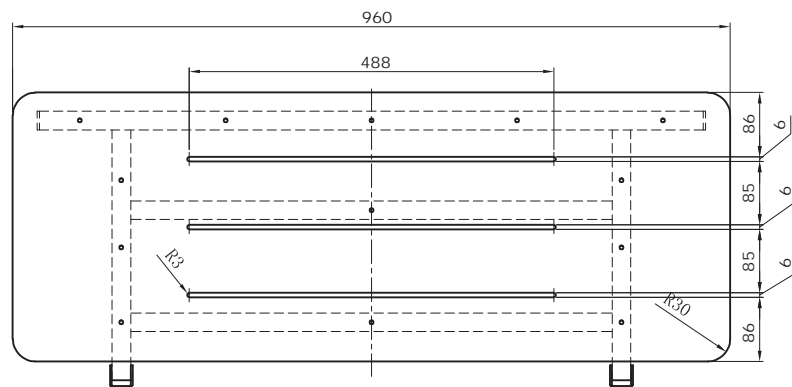
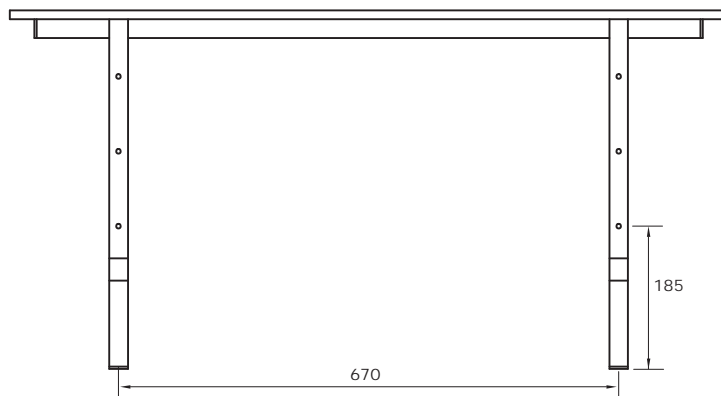
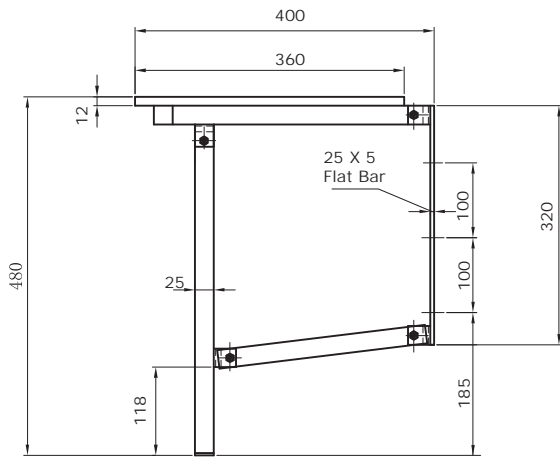
Stainless Steel Frame

STAINLESS STEEL SHOWER SEAT

Code	Description		
SHS960S	960mm	Stainless Steel Frame	*Complies with AS1428.1-2009

Features:

- Stainless steel frame
- Waterproof Phenolic top
- Drainage slots



SHOWER CURTAIN TRACKS

Aluminium Curtain Tracks

STRAIGHT ALUMINIUM CURTAIN TRACK TYPE C3

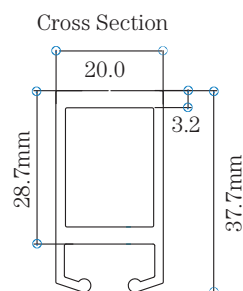
Code	Description	
EGC3.100.A	1000mm	Anodised
EGC3.100.PC	1000mm	White Powder Coated
EGC3.120.A	1200mm	Anodised
EGC3.120.PC	1200mm	White Powder Coated
EGC3.150.A	1500mm	Anodised
EGC3.150.PC	1500mm	White Powder Coated
EGC3.200.A	2000mm	Anodised
EGC3.200.PC	2000mm	White Powder Coated

Features:

- Straight profile
- Light weight
- Aluminium anodised or white powdercoated
- Easily cut to size on site

Supplied With: Straight Track
Wall Brackets
Runners

Profile



CORNER SHOWER CURTAIN TRACK KIT TYPE C4

Code	Description	
EGC4.120.KITA	1200 x 1200mm	
EGC4.160.KITA	1500 x 1635mm	Complies with AS1428.1-2009

Features:

- Easier handling in the kit format
- Light weight package
- Cheaper freight
- Easy to assemble
- Left or right handing no longer an issue
- Curtain rollers glide freely through the bend

Supplied With: Wall Brackets
Ceiling Support
Runners
Straight profiles
Bent profile
Fixings



SHOWER CURTAIN TRACKS

Aluminium Curtain Tracks

CORNER ALUMINIUM CURTAIN TRACK TYPE G4

Code	Description	
EGC4.100.A	1000mm x 1000mm	Anodised
EGC4.100.PC	1000mm x 1000mm	White Powder Coated
EGC4.120.A	1200mm x 1200mm	Anodised
EGC4.120.PC	1200mm x 1200mm	White Powder Coated
EGC4.150.A	1500mm x 1500mm	Anodised
EGC4.150.PC	1500mm x 1500mm	White Powder Coated
EGC4.160.LA	1600mm x 1100mm	Left - Anodised
EGC4.160.RA	1600mm x 1100mm	Right - Anodised
EGC4.160.LPC	1600mm x 1100mm	Left - White Powder Coated
EGC4.160.RPC	1600mm x 1100mm	Right - White Powder Coated
EGC4.165.A	1650mm x 750mm	Anodised
EGC4.165.PC	1650mm x 750mm	White Powder Coated
EGC4.000	Custom rails available including U Shaped Rails	

Features:

- One bent profile
- Light weight
- Aluminium anodised or white powdercoated
- Easily cut to size on site

Supplied With: Bent Track

Wall Brackets
Ceiling support
Runners



CEILING SUPPORT FOR ALUMINIUM CURTAIN TRACK

Code	Description
EGC4. DK.A	Includes: Dropper Tube (1000mm) and fittings - Anodised
EGC4. DK.W	Includes: Dropper Tube (1000mm) and fittings - White



SHOWER CURTAIN RAILS

25mm Satin Stainless Steel Curtain Rail

Features:

- Curtain rails for any application
- Tube diameter 25mm
- Ceiling support supplied with bent rails
- Stainless steel construction
- Welded or slip-in type wall flanges
- All Rails can be shortened on site



STRAIGHT STAINLESS STEEL CURTAIN RAIL TYPE C1

Code	Description	Wall Fixings
EGC1.100.25SL	1000mm	Slip-in type wall flanges
EGC1.120.25SL	1200mm	Slip-in type wall flanges
EGC1.150.25SL	1500mm	Slip-in type wall flanges
EGC1.200.25SL	2000mm	Slip-in type wall flangesVW

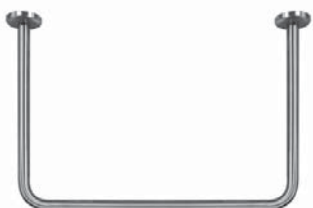
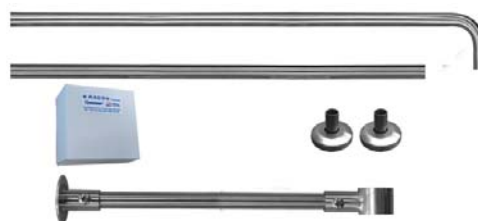
For straight lengths over 2000mm a ceiling support rod is recommended



CORNER SHOWER CURTAIN RAIL TYPE C2

Code	Description	Wall Fixings
EGC2.120.KIT	1200 x 1200mm	Slip-in type wall flanges
EGC2.160.KIT	1500 x 1635mm	Slip-in type wall flanges

All corner shower rails come as a KIT with one ceiling support rod



CUSTOM SHOWER CURTAIN RAIL

Code	Description
EGC2.000.25	Custom rails available including U Shaped Rails

All U-Shaped rails come as a KIT with two ceiling support rods

Ceiling Support



ACCESSORIES FOR STAINLESS STEEL SHOWER RAIL

Code	Description
EGC2. DK	Ceiling Support - Dropper Tube (1000mm) and fittings
EGC2.SLIP	Slip - in Flange

SHOWER CURTAINS

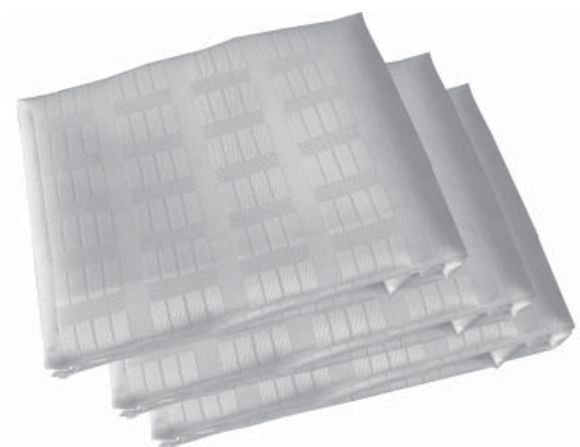
Weighted Polyester Shower Curtains

WHITE STRIPE POLYESTER

Code	Width	Drop
SC1318	1300mm	1800mm
SC1320	1300mm	2000mm
SC1818	1800mm	1800mm
SC1820	1800mm	2000mm
SC2018	2000mm	1800mm
SC2020	2000mm	2000mm
SC2218	2200mm	1800mm
SC2220	2200mm	2000mm
SC2418	2400mm	1800mm
SC2420	2400mm	2000mm
SC2618	2600mm	1800mm
SC2620	2600mm	2000mm
SC3018	3000mm	1800mm
SC3020	3000mm	2000mm

Features:

- 100% Polyester
- Box-Stripe Pattern
- Jacquard Weave
- Flame Retardant
- Mildew Resistant
- One line of Weighting in Hem



CURTAIN RINGS

Code	Description	
SCR Clear	Clear Plastic	Pack of 12
SCR White	White Plastic	Pack of 12
SCRSS	Stainless Steel	Pack of 12

Stainless Steel Curtain Rings



Plastic Curtain Rings

Available in clear or white



19MM ROBE / RAIL FITTINGS



CHROME PLATED CENTER PILLAR

Code	Description
UF1905	To Suit 19mm Tube



CHROME PLATED END PILLAR

Code	Description
UF1906	To Suit 19mm Tube



CHROME PLATED OVAL BASE

Code	Description
UF1907	To Suit 19mm Tube



RECTANGULAR FLANGE

Code	Description
UF1908	Size: 128mm x 52mm



CHROME PLATED STEEL TUBE 19MM

Code	Description
UF1909	Size: 900mm
UF1912	Size: 1200mm
UF1918	Size: 1800mm
UF1936Blk	Size :3600mm Box Qty 10 Lengths

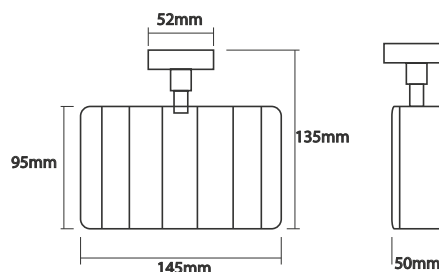
BATHROOM ACCESSORIES

Chrome Plated Stainless Steel



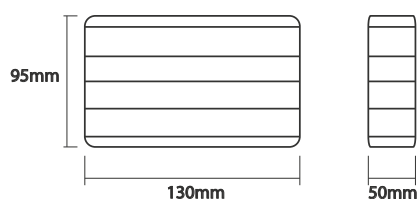
SOAP BASKET WITH BRACKET

Code	Description
EA-2040B	Soap Basket



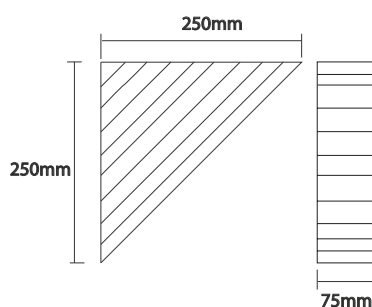
SOAP BASKET

Code	Description
EA-2041B	Soap Basket



CORNER SOAP BASKET

Code	Description
EA-2042B	Soap Basket



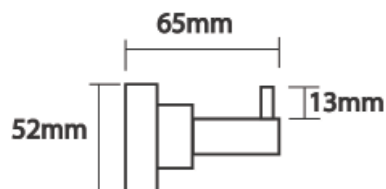
BATHROOM ACCESSORIES

Chrome Plated Stainless Steel



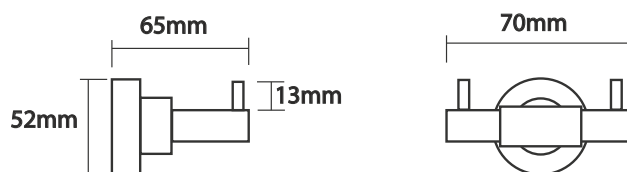
SINGLE ROBE HOOK

Code	Description
EA-2010H	Single Hook



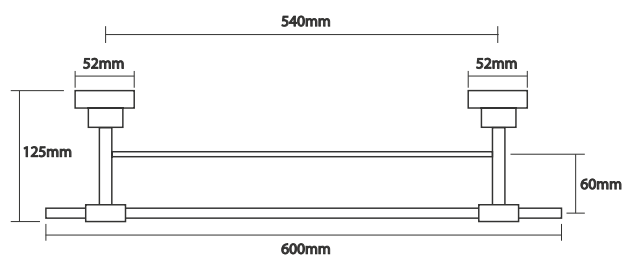
DOUBLE ROBE HOOK

Code	Description
EA-2011H	Double Hook



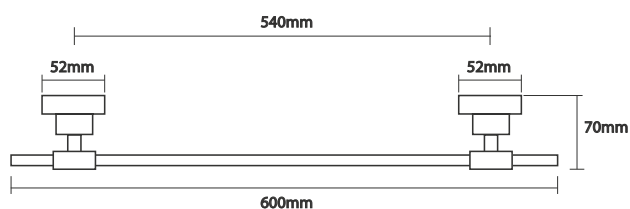
DOUBLE TOWEL RAIL

Code	Description
EA-2032T	Double Rail



SINGLE TOWEL RAIL

Code	Description
EA-2031T	Single Rail



BATHROOM ACCESSORIES

Stainless Steel Toilet Roll Holders



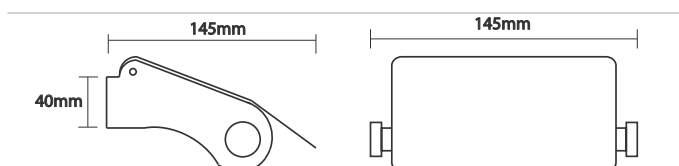
TOILET ROLL HOLDER

Code	Description
EA2056TR	Size: 125mm X 30mm



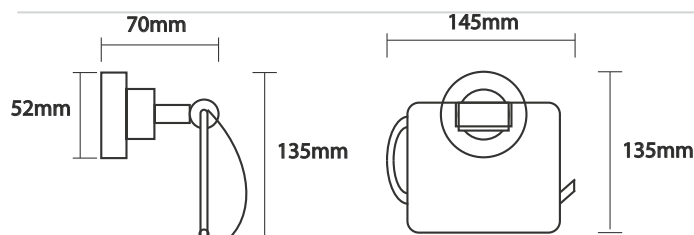
SINGLE ROLL HOLDER

Code	Description
EA-2055TR	Single Wall Mount Roll Holder



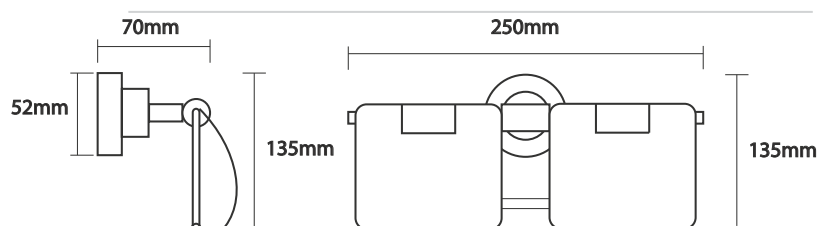
SINGLE ROLL HOLDER

Code	Description
EA-2051TR	Single Wall Mount Roll Holder



DOUBLE ROLL HOLDER

Code	Description
EA-2052TR	Double Wall Mount Roll Holder



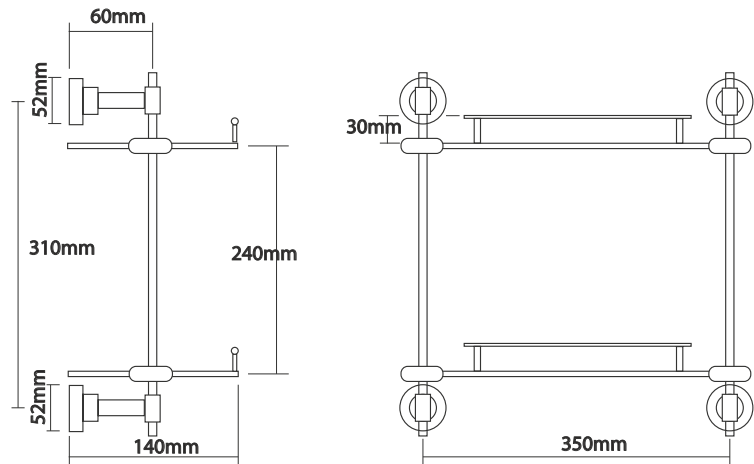
BATHROOM ACCESSORIES

Glass & Stainless Steel Shelves



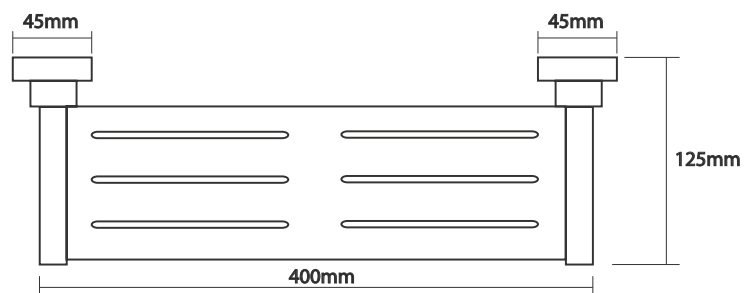
DOUBLE GLASS SHELF

Code	Description
EA-2022S	Double Glass Shelf With 6mm Tempered Glass



STAINLESS STEEL SHELF

Code	Description
EA2020S	400mm x 125mm AS1428.1-2009 Compliant



SIGNAGE WITH BRAILLE

Australian Standards AS1428.1
& Building Code Compliant BCA D3.6 (Ncc 2011)



FEMALE TOILET WITH BRAILLE

Code	Description
BS.FT	PVC - White on Blue



FEMALE AMBULANT TOILET WITH BRAILLE

Code	Description
BS.FAT	PVC - White on Blue



FEMALE ACCESSIBLE TOILET WITH BRAILLE

Code	Description
BS.FACT	PVC - White on Blue



FEMALE ACCESSIBLE TOILET LH WITH BRAILLE

Code	Description
BS.FACTL	PVC - White on Blue



FEMALE ACCESSIBLE TOILET RH WITH BRAILLE

Code	Description
BS.FACTR	PVC - White on Blue



MALE TOILET WITH BRAILLE

Code	Description
BS.MT	PVC - White on Blue

SIGNAGE



MALE AMBULANT TOILET WITH BRAILLE

Code	Description
BS.MAT	PVC - White on Blue



MALE ACCESSIBLE TOILET WITH BRAILLE

Code	Description
BS.MACT	PVC - White on Blue



MALE ACCESSIBLE TOILET LH WITH BRAILLE

Code	Description
BS.MACTL	PVC - White on Blue



MALE ACCESSIBLE TOILET RH WITH BRAILLE

Code	Description
BS.MACTR	PVC - White on Blue



UNISEX TOILET WITH BRAILLE

Code	Description
BS.UT	PVC - White on Blue



UNISEX ACCESSIBLE TOILET WITH BRAILLE

Code	Description
BS.UACT	PVC - White on Blue

SIGNAGE

UNISEX ACCESSIBLE TOILET LH
WITH BRAILLE

Code	Description
BS.UACTL	PVC - White on Blue

UNISEX ACCESSIBLE TOILET RH
WITH BRAILLE

Code	Description
BS.UACTR	PVC - White on Blue

UNISEX ACCESSIBLE TOILETS LH
& PARENTS ROOM WITH BRAILLE

Code	Description
BS.UACTBL	PVC - White on Blue

UNISEX ACCESSIBLE TOILETS RH
& PARENTS ROOM WITH BRAILLE

Code	Description
BS.UACTBR	PVC - White on Blue

UNISEX ACCESSIBLE SHOWER LH
& TOILET WITH BRAILLE

Code	Description
BS.UACTSL	PVC - White on Blue

UNISEX ACCESSIBLE SHOWER RH
& TOILET WITH BRAILLE

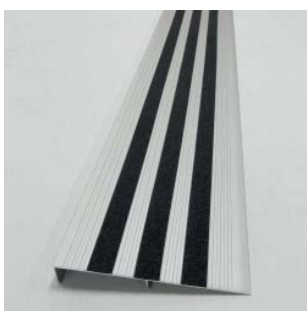
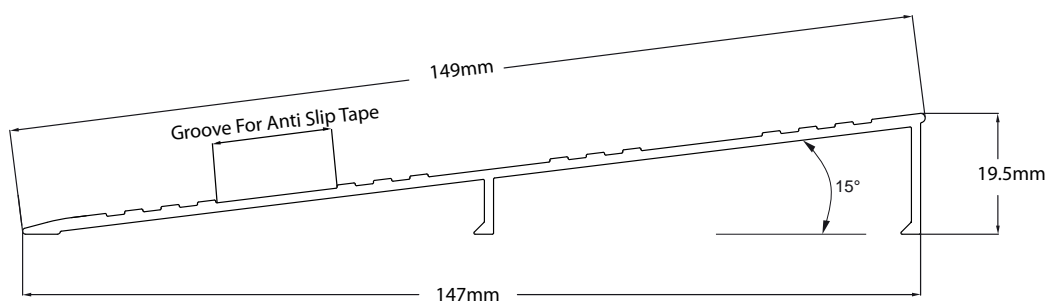
Code	Description
BS.UACTSR	PVC - White on Blue

ALUMINIUM THRESHOLD RAMPS

For Wheelchair Access

ALUMINIUM THRESHOLD RAMPS - WITH NON SLIP TAPE

Code	Description
TR19-1500	1500mm long x 147mm



RUBBER THRESHOLD RAMPS

For Wheelchair Access

RUBBER THRESHOLD RAMPS

Code	Description
TRO25	Rubber Ramp 1010(L) X 200 (W) X 25(H)
TRO50	Rubber Ramp 1140(L) X 400 (W) X 50(H)

**Features:**

Meets Access & Mobility

Gradient 1:8

Recycled Rubber



ORDER FORM

Please email or Fax Order to our Melbourne Distribution Centre

CUSTOMER: **DATE:**

CONTACT: **JOB REF:**

PHONE: **P ORDER NO:**

QTY	PRODUCT DESCRIPTION & CODE	UNIT PRICE	TOTAL

DELIVERY INSTRUCTIONS / ADDRESS:

TERMS & CONDITIONS

Deliveries:

For orders under \$500.00 (excl. GST) - shipping costs apply

For orders over \$500.00 (excl. GST) - F.I.S.

(Excludes: FNQ, WA, NT, TAS & Regional. Assisted grabrails, curtain tracks & other larger items)

Local courier rates will apply for the above.

Installation:

It is recommended that all installations be carried out by a suitably qualified installer. Reference should be made to the Australian Standards for all installations. Professional advice should be sought on any fasteners used, as Axess Trading Pty Ltd does not provide any guarantee on fasteners supplied with any of our products.

Axess Trading Pty Ltd does not accept any liability on products incorrectly installed.

Illustrations:

All Drawings in this catalogue are for illustration purposes only and are not to scale. Please check measurements carefully before purchasing any product.

Price:

- a) This price list and any quotation issued by Axess Trading Pty Ltd is an invitation to treat only, not an offer to sell.
- b) Prices are subject to change without notice.
- c) Prices are shown as GST exclusive.
- d) Any GST must be paid by the Buyer as part of the price.

Returns Policy:

This policy applies where you wish to return items because they are no longer required. It does not affect your statutory or contractual rights relating to faulty or defective products.

- a) Goods may only be returned with sellers approval. All claims must include date and original invoice number.
- b) Goods returned for credit must be in original condition.
- c) If items were ordered in error, a request for credit must be received within 14 days from date of receipt.
- d) A restocking fee applies for goods no longer required.
- e) Shower curtains and curtain tracks will not be accepted for return.
- f) Customers returning goods will not be credited for any shipping costs incurred by the seller, unless returning goods under warranty.
- g) Goods specifically manufactured to the Buyers requirements will not be accepted for credit.
- h) Goods incorrectly supplied or faulty will be replaced with no cost to the Buyer.

Payment Terms:

Standard payment terms for the goods, GST and delivery charges are 30 days from the end of the month unless COD or otherwise agreed upon.

AXESS TRADING

AXESS TRADING GROUP PTY LTD

25 / 69 ACACIA RD, FERNTREE GULLY, VIC, 3156

TELEPHONE: (03) 9753 6999 OR 1300 138 086

FACSIMILE: (03) 9753 6799 OR 1300 138 865

ABN:52 637 518 248

SALES@AXESSTRADING.COM.AU

WEBSITE: WWW.AXESSTRADING.COM.AU