

## BARIATRIC TOILET SUPPORT ARMS



# Bariatric Toilet Support Arms

Designed & Manufactured in Australia

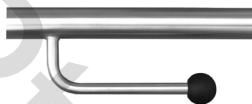


## Features

- This design allows for vertical (SWL) up to 300kg and lateral (SWL) up to 160kg.
- Support leg with height adjustable anti slip foot-pad.
- Support leg locks in position when open.
- Grabrail is locked in upright position by a locking mechanism.
- Single rails are available for left or right hand access.
- Manufactured using 38mm tube.
- Electro polished stainless steel structure for long term protection.
- Optional toilet roll holder and nurse call provision available.
- Each support arm package includes an installation diagram highlighting critical measurements with compliance to AS1428.1-2009.

## Optional Fittings

The Eisegrip® nursecall provision suits most leading communication hardware.  
(Communication hardware supplied by others)



Toilet Roll Holder

## Specifications:

Laboratory Tested For Safe Working Loads

Load Tested

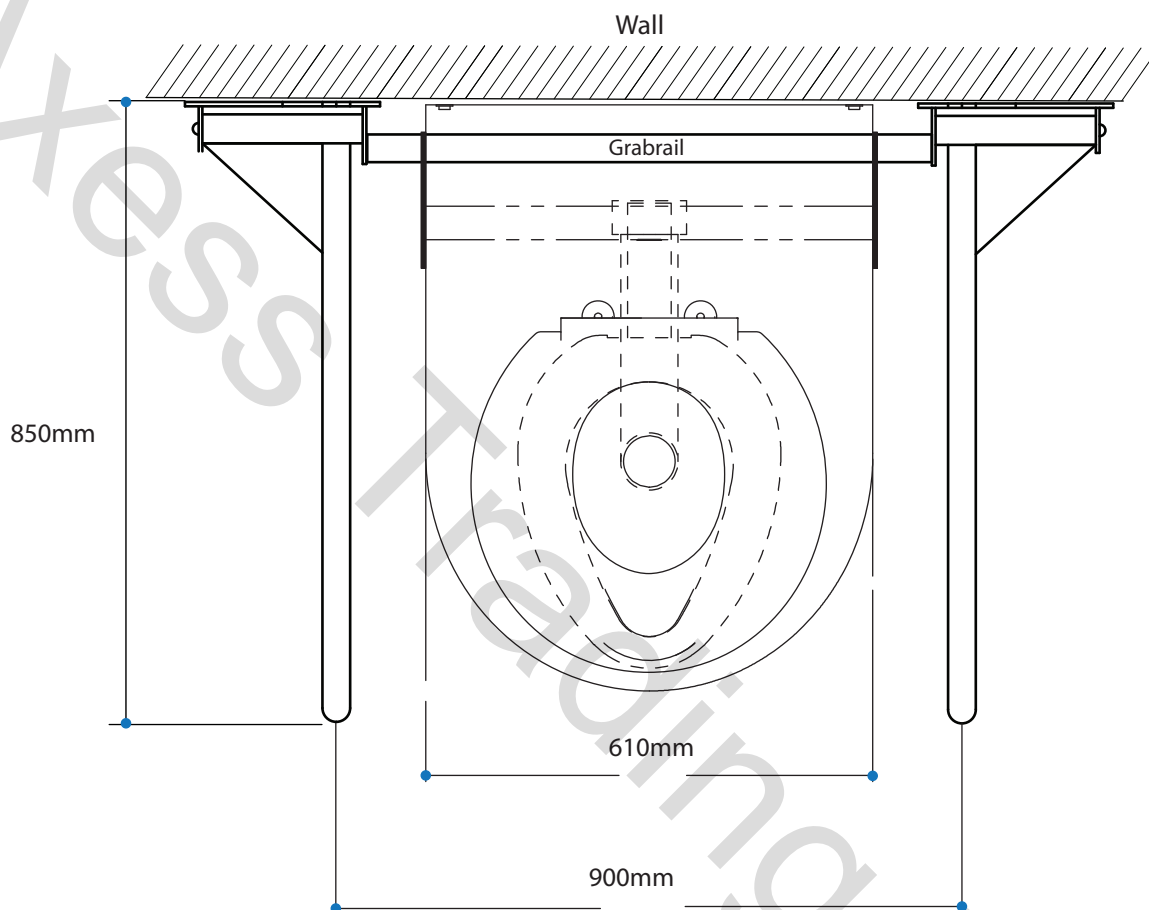
PART NO.	ORIENTATION
EGT46.SL	Left Hand Support Arm (Single)
EGT46.SR	Right Hand Support Arm (Single)
EGT46.SD	Left & Right Support Arms (Double)



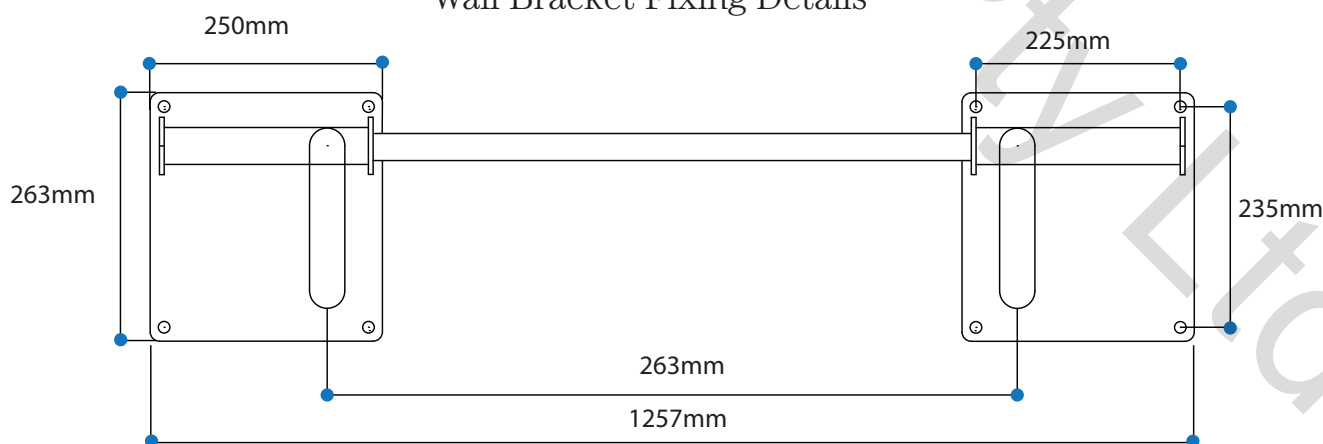
# Bariatric Toilet Support Arms



Toilet Support Arm Dimensions



Wall Bracket Fixing Details



Consult your architect for suitable load bearing wall designs, before installing the EGT46 Drop Down Support Arm.

Please phone customer service on 1300 138 086

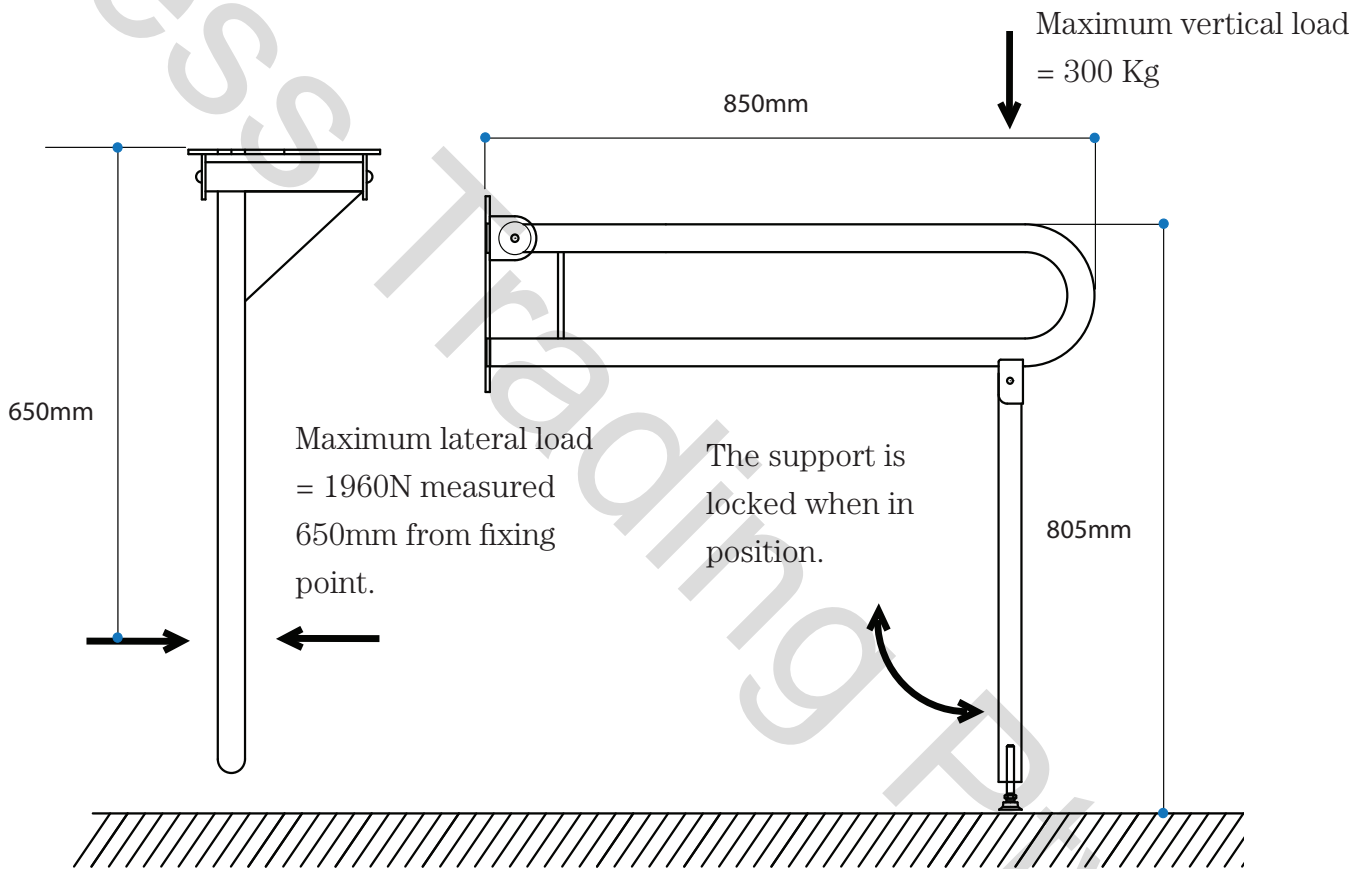
## Contact Customer Service

New South Wales  
Phone: 1300 720 672

Victoria  
Phone: 1300 138 086  
Fax: 1300 138 865

[www.axesstrading.com.au](http://www.axesstrading.com.au)

Laboratory tested safe working loads.



Contact customer service for bariatric toilet specifications.

Phone: 1300 138 086